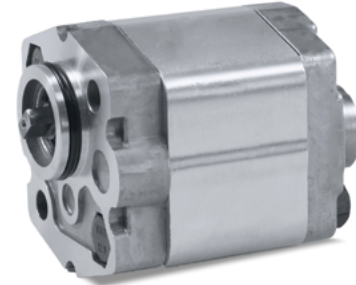


# Hydraulic Gear Pump AP-0



## DESCRIPTION

- AP-0 is an all aluminum construction, high pressure Mini Hydraulic Gear Pump. The standard mounting flange is as detailed on the installation drawing and porting is any combination of rear, front or side as defined in the ordering example.



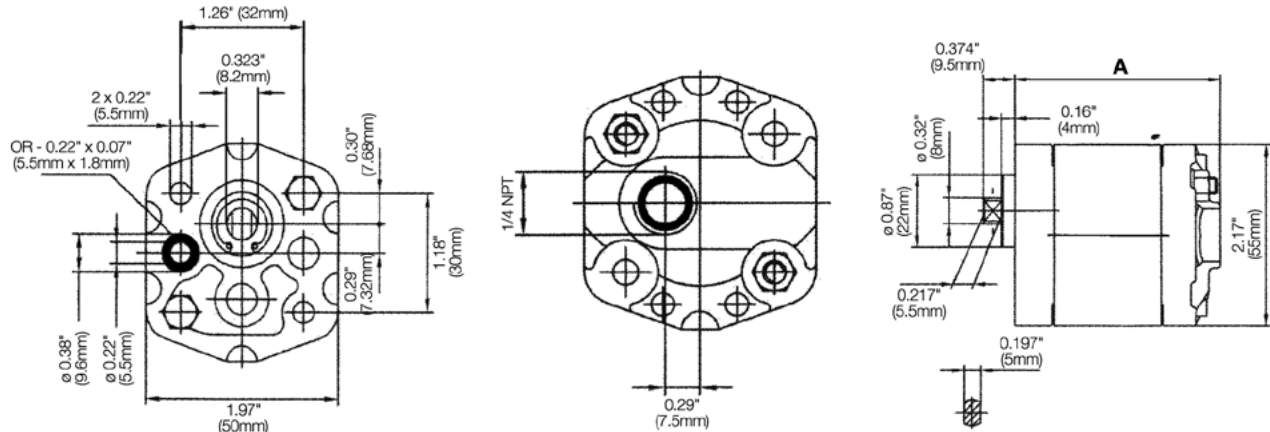
## TECHNICAL DATA

- Filtration: 25 micron or better
- Oil Viscosity: 20 mm<sup>2</sup>/s - 100mm<sup>2</sup>/s
- Inlet Pressure: 12 to 32 psi absolute
- Temperature: Oil: -25°C to 80°C / -12°F to 175°F  
Ambient: -22°C to 55°C / -8°F to 130°F

Model	Displacement		Rated Pressure		Speed RPM		Weight	
	cm <sup>3</sup> /rev	cu.in/rev	PSI	BAR	Min.	Max.	Lbs.	Kg
AP-0-0.16	0.16	0.009	3000	200	800	7000	0.82	0.37
AP-0-0.25	0.25	0.015	3000	200	800	7000	0.84	0.38
AP-0-0.50	0.50	0.030	3000	200	800	7000	0.87	0.39
AP-0-0.75	0.75	0.045	3000	200	800	7000	0.91	0.41
AP-0-1.00	1.00	0.060	3000	200	800	6000	0.92	0.42
AP-0-1.25	1.25	0.080	3000	200	800	5000	1.00	0.45
AP-0-1.50	1.50	0.090	3000	200	800	4000	1.04	0.47
AP-0-1.75	1.75	0.110	3000	200	800	4000	1.08	0.49
AP-0-2.00	2.00	0.120	3000	200	800	3500	1.13	0.51

- Flow rate in gpm - Displacement (cu.in/rev) X speed (rpm)/231
- Volumetric efficiency % >93

## INSTALLATION DATA



Model	A	
	mm	inch
AP-0-0.16	60	2.36
AP-0-0.25	61	2.40
AP-0-0.50	63	2.48
AP-0-0.75	65	2.55
AP-0-1.00	68	2.68

Model	A	
	mm	inch
AP-0-1.25	70	2.75
AP-0-1.50	72	2.83
AP-0-1.75	75	2.95
AP-0-2.00	77	3.03

## ORDERING INFORMATION

