

Manifolds

Parallel & Series

- ◆ D03, D05, D08

Cover Plates

- ◆ D03, D05, D08

Valve Adapters

- ◆ D05, D08

Subplates

- ◆ D03, D05, D08



MP FILTRI (CANADA) INC.

D03 Bar Manifolds

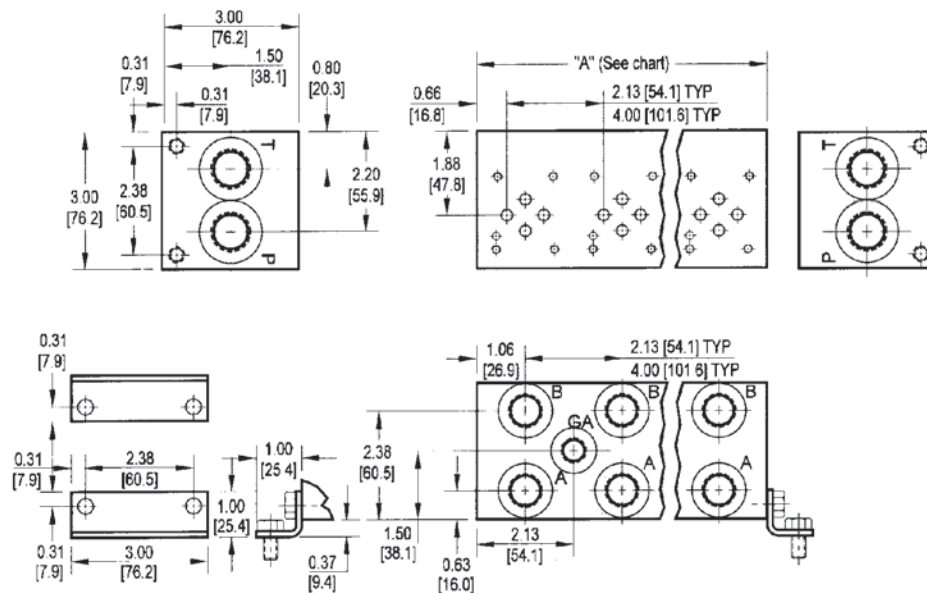
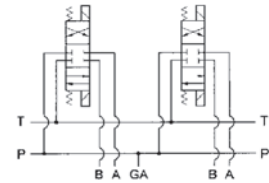
D03 Parallel Circuit Manifold

Specifications:

- ◆ 1 thru 16 station lengths available
- ◆ Pressure Rating: Aluminum: 3000 PSI.
- ◆ Valve mounting is #10-24 UNC on NPTF and SAE manifolds.
- ◆ P & T: 1/2" NPTF or -10 SAE.
- ◆ A & B: 3/8" NPTF or -8 SAE.
- ◆ Gauge port is included on NPTF and SAE two station and longer manifolds. It is 1/4" NPTF or -6 SAE.
- ◆ Mounting kit includes 2 steel mounting brackets, eight 0.31-18 hex head screws, and 8 washers.
- ◆ Gauge port plug included if applicable.

Options Available:

- ◆ Relief valve cavities may be machined for Compact Controls, Delta, Fluid Controls, Hydraforce, Modular Controls, Parker, or Sun valves.
- ◆ Manifolds may be machined with isolations in the P and/or T ports.
- ◆ A two-station sandwich module is available that connects the A and B ports respectively of the two stations. Consult MP Filtri for part number and pricing.
- ◆ High Flow and Ductile Iron manifolds available



No. of Stations	01	02	03	04	05	06	07	08
"A" Length (2" spa)	2.13	4.25	6.38	8.50	10.63	12.75	14.88	17.00
Weight in lb. 2"	3	4	6	8	9	11	12	14
"A" Length (4" spa)	--	6.13	10.13	14.13	18.13	22.13	26.13	30.13
Weight in lb. 4"	--	6	9	12	15	19	22	25

- ◆ 9-16 station manifolds are non-stock. Consult MP Filtri for delivery.

Ordering Information

D03 Parallel Circuit Manifolds

A

D03

P

01

2

P

/S

MATERIAL

A

6061-T6 Aluminum

SERIES

D03

NFPA D03 Valve pattern

MANIFOLD CIRCUIT

P

Parallel

NUMBER OF STATIONS

01...16

Available with spacing code 2

02...08

Available with spacing code 4

OPTIONS

/C

Relief Cavity Common Cavity

/S

Relief Cavity Sun Cavity

/P*

Pressure Isolation
PA...PJ avail. 2.13"
PA...PF avail. 4.00"

/T*

Tank Isolation
TA...TJ avail. 2.13"
TA...TF avail. 4.00"

* Not available on 01 Station Parallel
Omit if not required.

PORT THREADS

P

NPTF
1/2" NPTF P&T
3/8" NPTF A&B
1/4" NPTF GA

S

SAE
SAE -10 P&T
SAE -8 A&B
SAE -6 GA

VALVE SPACING
Centre to Centre

2

2.13"

4

4.00"

High Flow and Ductile Iron manifolds available consult MP Filtri

Parallel Circuit

D03 Bar Manifolds

International Directional Valve
Interface Size Cross Reference:
NFPA (USA): Old size:D01
New size:D03
ISO-4401: Size: 03
CETOP-R35H: Size: 3
NG: Size: 6

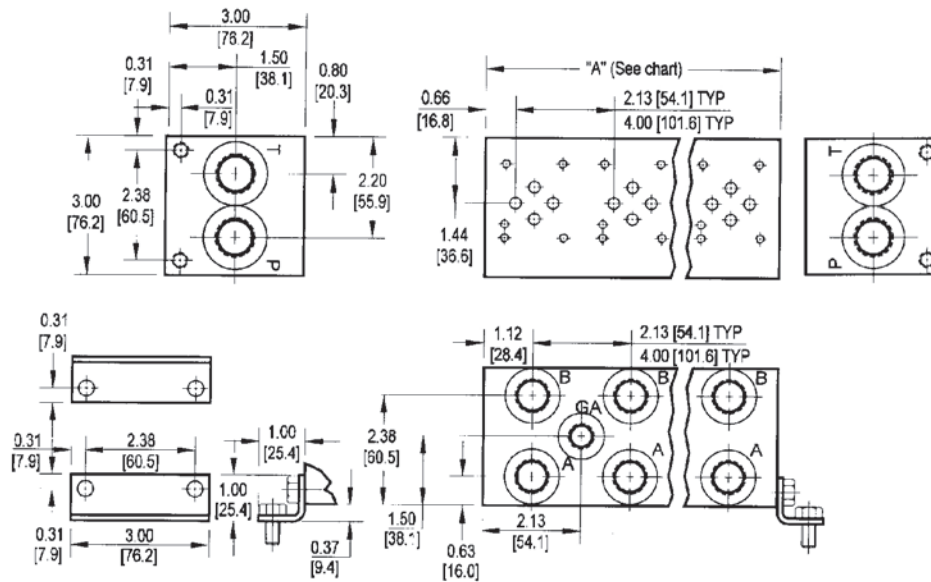
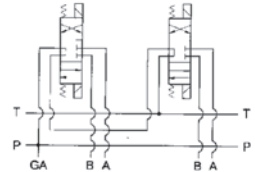
D03 Series Circuit Manifold

Specifications:

- ◆ 2 thru 4 station lengths available
- ◆ Pressure Rating: Aluminum: 3000 PSI
- ◆ Valve mounting is #10-24 UNC on NPTF and SAE manifolds.
- ◆ P & T: 1/2" NPTF or -10 SAE.
- ◆ A & B: 3/8" NPTF or -8 SAE.
- ◆ Gauge port is included on NPTF and SAE manifolds. It is 0.25-18 NPTF or -6 SAE.
- ◆ Mounting kit includes 2 steel mounting brackets, eight 0.31-18 hex head screws, and 8 washers.
- ◆ Gauge port plug included if applicable.

Options Available:

- ◆ Relief valve cavities may be machined for Compact Controls, Delta, Fluid Controls, Hydraforce, Modular Controls, Parker, or Sun valves.
- ◆ A two-station adaptor is available that connects the A and B ports respectively of the two stations.
- ◆ High Flow and Ductile Iron manifolds available



No. of Stations

02

03

04

"A" Length (2" spa)	4.25	6.38	8.50
Weight in lb. 2"	4	6	8
"A" Length (4" spa)	6.13	10.13	14.13
Weight in lb. 4"	6	9	12

Ordering Information

D03 Series Circuit Manifolds

A

D03

S

01

2

P

/S

MATERIAL

A

6061-T6 Aluminum

SERIES

D03

NFPA D03 Valve pattern

MANIFOLD CIRCUIT

S

Series

NUMBER OF STATIONS

02...05

Available with spacing code 2

02...04

Available with spacing code 4

OPTIONS

/C

Relief Cavity Common Cavity

/S

Relief Cavity Sun Cavity

Omit if not required.

PORT THREADS

P

NPTF
1/2" NPTF P&T
3/8" NPTF A&B
1/4" NPTF GA

S

SAE
SAE -10 P&T
SAE -8 A&B
SAE -6 GA

VALVE SPACING
Centre to Centre

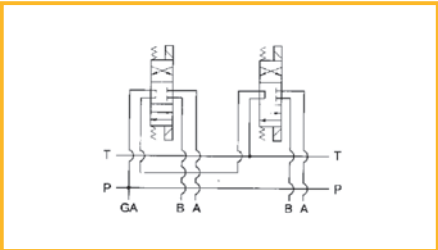
2

2.13"

4

4.00"

Series Circuit



High Flow and Ductile Iron manifolds available consult MP Filtri

D05 Bar Manifolds

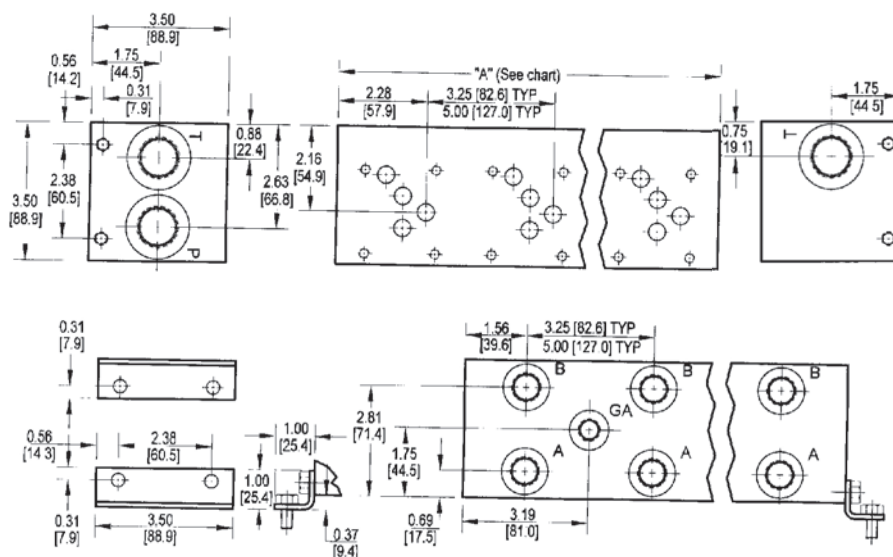
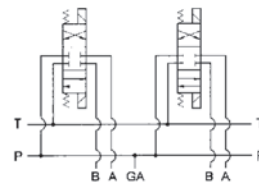
D05 Parallel Circuit Manifold

Specifications:

- ◆ 1 thru 21 station lengths available
- ◆ Pressure Rating: Aluminum: 3000 PSI
- ◆ Valve mounting is 0.25-20 UNC on NPTF and SAE manifolds.
- ◆ P & T: 3/4" NPTF or -12 SAE.
- ◆ A & B: 1/2" NPTF or -8 SAE.
- ◆ Gauge port is included on NPTF and SAE two station and longer manifolds. It is 1/4" NPTF or -6 SAE.
- ◆ Mounting kit includes 2 steel mounting brackets, eight 5/16-18 hex head screws, and 8 washers.
- ◆ Gauge port plug included if applicable.

Options Available:

- ◆ Relief valve cavities may be machined for Compact Controls, Delta, Fluid Controls, Hydraforce, Modular Controls, Parker, or Sun valves.
- ◆ Manifolds may be machined with isolations in the P and/or T ports.
- ◆ A two-station sandwich module is available that connects the A and B ports respectively of the two stations. Consult MP Filtri for part number and pricing.
- ◆ High Flow and Ductile Iron manifolds available



No. of Stations	01	02	03	04	05	06	07	08	09	10	11	12	13	14
"A" Length (3" spa)	3.25	6.50	9.75	13.00	16.25	19.50	22.75	26.00	--	--	--	--	--	--
Weight in lb. 3"	6.50	8	11	14	17	21	24	27	--	--	--	--	--	--
"A" Length (5" spa)	--	8.25	13.25	8.25	23.25	28.25	33.25	38.25	43.25	48.25	53.25	58.25	63.25	68.25
Weight in lb. 5"	--	9	15	20	25	30	35	41	46	50	55	60	65	71

- ◆ 8-21 station manifolds are non-stock. Consult MP Filtri for delivery.

Ordering Information

D05 Parallel Circuit Manifolds

A

D05

P

01

3

P

/S

MATERIAL

A

6061-T6 Aluminum

SERIES

D05

NFPA D05 Valve pattern

MANIFOLD CIRCUIT

P

Parallel

NUMBER OF STATIONS

01...21

Available with spacing code 3

02...14

Available with spacing code 5

OPTIONS

/C

Relief Cavity Common Cavity

/S

Relief Cavity Sun Cavity

/P*

Pressure Isolation
PA...PJ avail. 3.25"
PA...PF avail. 5.00"

/T*

Tank Isolation
TA...TJ avail. 3.25"
TA...TF avail. 5.00"

* Not available on 01 Station Parallel
Omit if not required.

PORT THREADS

P

NPTF
3/4" NPTF P&T
1/2" NPTF A&B
1/4" NPTF GA

S

SAE
SAE -12 P&T
SAE -8 A&B
SAE -6 GA

VALVE SPACING
Centre to Centre

3

3.25"

5

5.00"

High Flow and Ductile Iron manifolds available consult MP Filtri

Parallel Circuit

9-6

D05 Bar Manifolds

International Directional Valve
Interface Size Cross Reference:
NFFA (USA): Old size:D02
New size:D05
ISO-4401: Size: 05
CETOP-R35H: Size: 5
NG: Size: 10

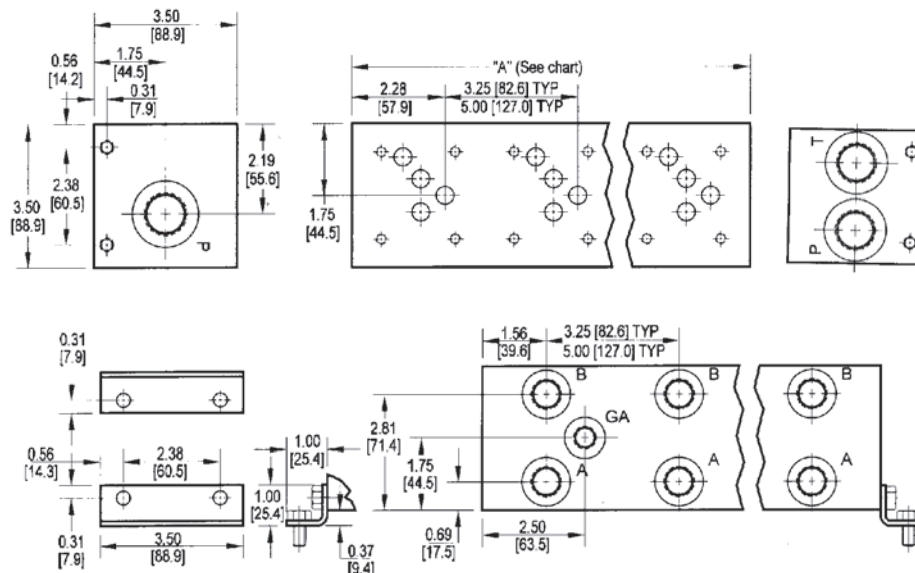
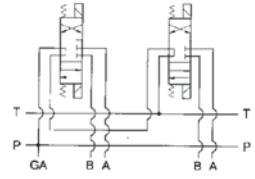
D05 Series Circuit Manifold

Specifications:

- ◆ 2 thru 4 station lengths available
- ◆ Pressure Rating: Aluminum: 3000 PSI
- ◆ Valve mounting is 0.25-20 UNC on NPTF and SAE manifolds.
- ◆ P & T: 3/4" NPTF or -12 SAE.
- ◆ A & B: 1-4" NPTF or -8 SAE.
- ◆ Gauge port is included on NPTF and SAE two station and longer manifolds. It is 1/2" NPTF or -6 SAE.
- ◆ Mounting kit includes 2 steel mounting brackets, eight 5/16-18 hex head screws, and 8 washers.
- ◆ Gauge port plug included if applicable.

Options Available:

- ◆ A two-station adaptor is available that connects the A and B ports respectively of the two stations. Consult MP Filtri for part number & pricing.
- ◆ High Flow and Ductile Iron manifolds available



No. of Stations	02	03	04
"A" Length (3" spa)	6.50	9.75	13.00
Weight in lb. 3"	8	11	14
"A" Length (5" spa)	8.25	13.25	18.25
Weight in lb. 5"	9	15	20

- ◆ 04 stations are non-stock. Consult MP Filtri for delivery.

Ordering Information

D05 Series Circuit Manifolds

A

D05

S

01

3

P

/S

MATERIAL

A

6061-T6 Aluminum

SERIES

D05

NFPA D05 Valve pattern

MANIFOLD CIRCUIT

S

Series

NUMBER OF STATIONS

02...04

Available with spacing code 5

02...04

Available with spacing code 5

OPTIONS

/C

Relief Cavity Common Cavity

/S

Relief Cavity Sun Cavity

Available in two stations only
Omit if not required.

PORT THREADS

P

NPTF
3/4" NPTF P&T
1/2" NPTF A&B
1/4" NPTF GA

S

SAE
SAE -12 P&T
SAE -8 A&B
SAE -6 GA

VALVE SPACING
Centre to Centre

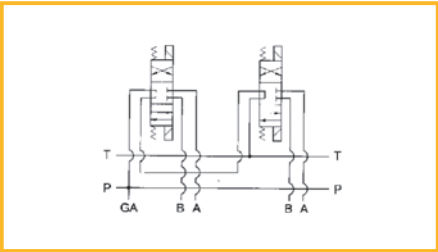
3

3.25"

5

5.00"

Series Circuit



High Flow and Ductile Iron manifolds available consult MP Filtri

D08 Parallel Circuit Manifold

Ordering Information

D08 Parallel Circuit Manifolds

A

D08

P

01

5

P

/S

MATERIAL

A

6061-T6 Aluminum

SERIES

D08

NFPA D08 Valve pattern

MANIFOLD CIRCUIT

P

Parallel

NUMBER OF STATIONS

01...07

Available with spacing code 3

02...05

Available with spacing code 5

Options

/C

Relief Cavity Common Cavity

/S

Relief Cavity Sun Cavity

/P*

Pressure Isolation
PA...PG avail. 5.25"
PA...PD avail. 7.00"

/T*

Tank Isolation
TA...TF avail. 5.25"
TA...TD avail. 7.00"

Port Threads

P

NPTF
1" NPTF P,A,B
1-1/4" NPTF T
3/8" NPTF Y
1/4" NPTF X&GA

S

SAE
SAE -16 P,A,B
SAE -20 T
SAE -8 Y
SAE -4 X
SAE -6GA

Valve Spacing

Centre to Centre

5

5.25"

7

7.00"

* Not available on 01 Station Parallel
Omit if not required.

High Flow and Ductile Iron manifolds available consult MP Filtri

Parallel Circuit

9-10

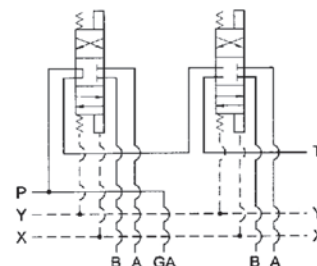
D08 Bar Manifolds

International Directional Valve
Interface Size Cross Reference:
NFA (USA): Old size:D06
New size:D08
ISO-4401: Size: 08
CETOP-R35H: Size: 8
NG: Size: 25

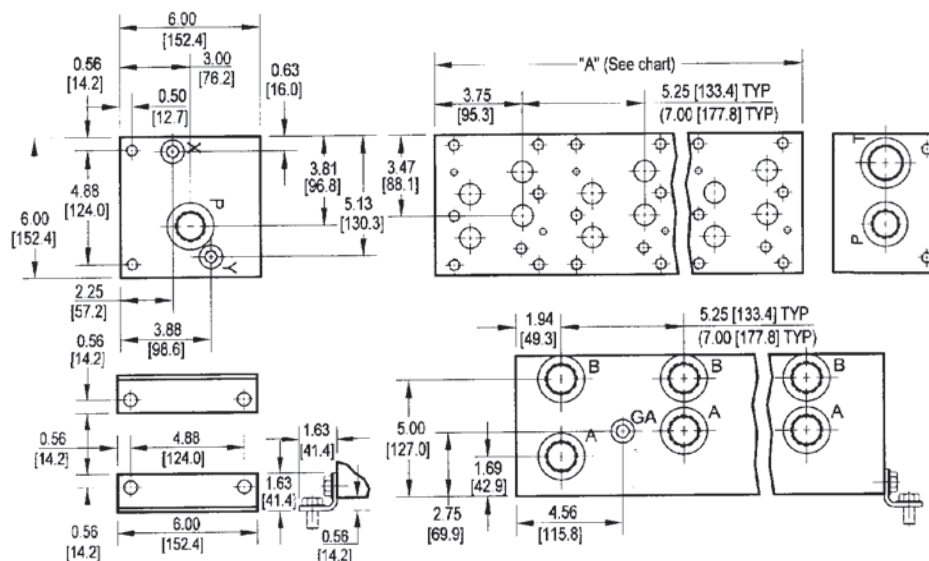
D08 Series Circuit Manifold

Specifications:

- ◆ 2 thru 3 station lengths available
- ◆ Pressure Rating: Aluminum: 3000 PSI
- ◆ Valve mounting is 0.50-13 UNC on NPTF and SAE manifolds.
- ◆ P, A&B: 1" NPTF or -16 SAE.
- ◆ T: 1-1/4" NPTF or -20 SAE.
- ◆ X&Y: 3/8" NPTF or -6 SAE.
- ◆ Gauge port is included on NPTF and SAE two station and longer manifolds. It is 1/4" NPTF or -6 SAE.
- ◆ Mounting kit includes 2 steel mounting brackets, eight 5/16"-18 hex head screws, and 8 washers.
- ◆ Gauge port plug included if applicable.



- ◆ High Flow and Ductile Iron manifolds available consult MP Filtri



No. of Stations

02

03

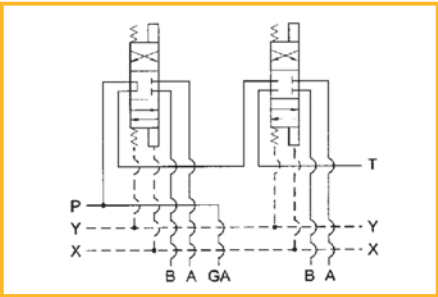
"A" Length (5" spa)	10.50	15.75
Weight in lb.	37	51
"A" Length (7" spa)	12.25	19.25
Weight in lb.	51	63

Ordering Information

D08 Series Circuit Manifolds

A	D08	S	02	5	P
MATERIAL			PORT THREADS		
A	6061-T6 Aluminum		P NPTF 1" NPTF P,A,B 1-1/4" NPTF T 3/8" NPTF Y 1/4" NPTF X&GA		
SERIES			S SAE SAE -16 P,A,B SAE -20 T SAE -8 Y SAE -4 X SAE -6GA		
D08	NFPA D08 Valve pattern		VALVE SPACING Centre to Centre		
MANIFOLD CIRCUIT			5 5.25"		
S	Series		7 7.00"		
NUMBER OF STATIONS					
02...03	Available with spacing code 5				
02...03	Available with spacing code 7				

Series Circuit



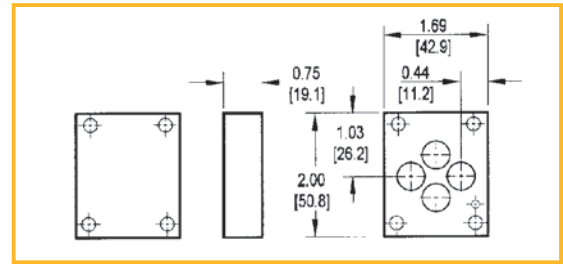
High Flow and Ductile Iron manifolds available consult MP Filtri

D03 Cover Plates

International Directional Valve Interface Size Cross Reference:
 NFPA (USA): Old size: D01, New size: D03
 ISO-4401: Size: 03
 CETOP-R35H: Size: 3
 NG: Size: 6

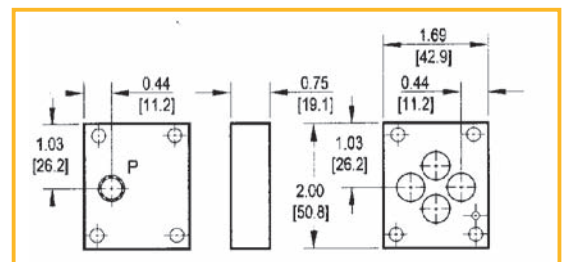
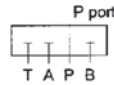
◆ D03 Parallel Circuit Cover Plate

Pressure Rating: Aluminum: 3000 PSI
 Four #10-24 x 0.88 long cap screws, one spring pin, and four viton "O"-rings are included.



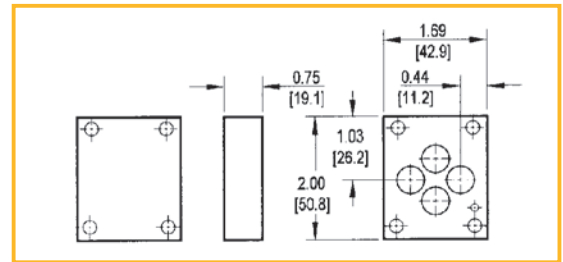
◆ D03 Parallel Circuit Cover Plate With Gauge Port

Pressure Rating: Aluminum: 3000 PSI
 Four #10-24 x 0.88 long cap screws, one spring pin, one pipe plug and four viton "O"-rings are included.



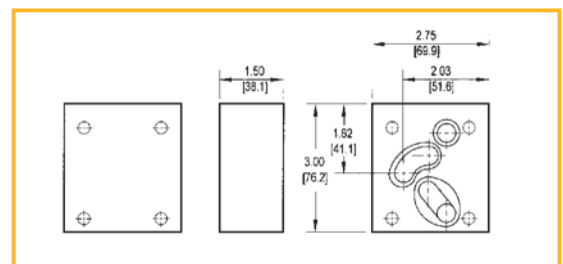
◆ D03 Series Circuit Cover Plate

Pressure Rating: Aluminum: 3000 PSI
 Four #10-24 x 0.88 long cap screws, one spring pin, and four viton "O"-rings are included.



◆ D03 Crossover Circuit Cover Plate

Pressure Rating: Aluminum: 3000 PSI
 Four #10-24 x 0.88 long cap screws, one spring pin, and four viton "O"-rings are included.



Ordering Information D03 Cover Plates

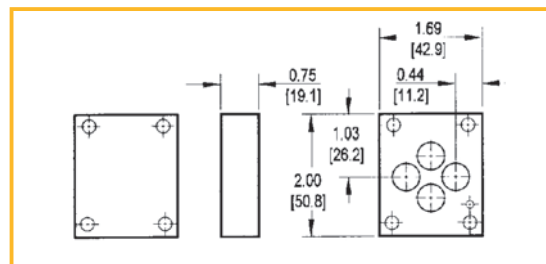
A		D03		CPP		G*			
MATERIAL		PLATE TYPE		GAUGE PORT					
A	6061-T6 Aluminum	CPP	Parallel Circuit	G*	1/4" NPTF	* Available with parallel circuit only. Omit if not required			
SERIES		CPS	Series circuit						
D03	NFPA D03 Valve pattern	COP	Crossover Circuit Cover Plate (P to A, B to T)						

D05 Cover Plates

International Directional Valve Interface Size Cross Reference:
 NFPA (USA): Old size: D02, New size: D05
 ISO-4401: Size: 05
 CETOP-R35H: Size: 5
 NG: Size: 10

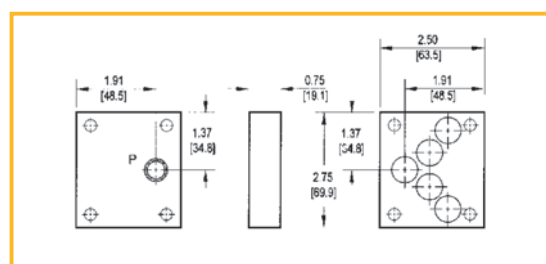
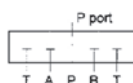
◆ D05 Parallel Circuit Cover Plate

Pressure Rating: Aluminum: 3000 PSI
 Four 1/4"-20 x 0.75 long cap screws, and
 five viton "O"-rings are included.



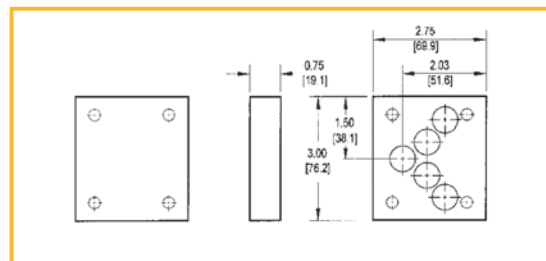
◆ D05 Parallel Circuit Cover Plate With Gauge Port

Pressure Rating: Aluminum: 3000 PSI
 Four 1/4"-20 x 0.75 long cap screws, one
 pipe plug and five viton "O"-rings are
 included.



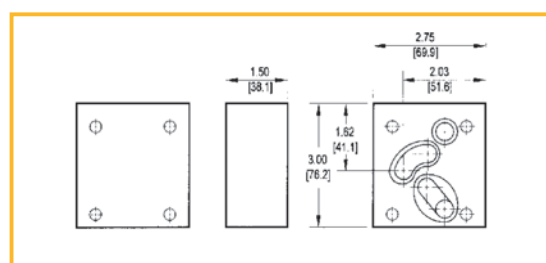
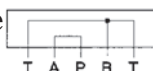
◆ D05 Series Circuit Cover Plate

Pressure Rating: Aluminum: 3000 PSI
 Four 1/4"-20 x 1.25 long cap screws,
 and five viton "O"-rings are included.



◆ D05 Crossover Circuit Cover Plate

Pressure Rating: Aluminum: 3000 PSI
 Four 1/4"-20 x 1.50 long cap screws,
 and five viton "O"-rings are included.



Ordering Information D05 Cover Plates

A		D05		CPP		G*			
MATERIAL		PLATE TYPE		GAUGE PORT					
A	6061-T6 Aluminum	CPP	Parallel Circuit	G*	1/4"-18 NPTF	* Available with parallel circuit only. Omit if not required			
		CPS	Series circuit						
		COP	Crossover Circuit Cover Plate (P to A, B to T)						
SERIES									
D05	NFPA D05 Valve pattern								

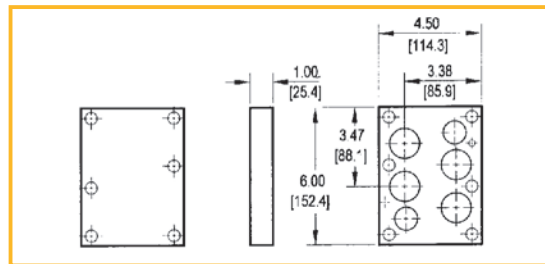
D08 Cover Plates

International Directional Valve Interface Size Cross Reference:
 NFPA (USA): Old size:D06
 New size:D08
 ISO-4401: Size: 08
 CETOP-R35H: Size: 8
 NG: Size: 25

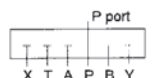
◆ D08 Parallel Circuit Cover Plate



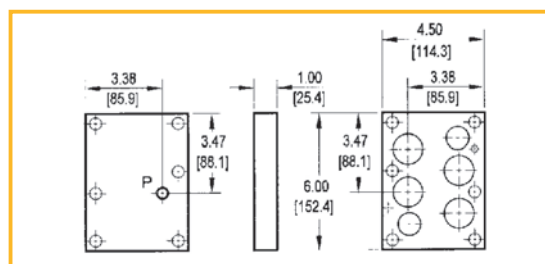
Pressure Rating: Aluminum: 3000 PSI
 Six 1/2"-13 x 1.50 long cap screws, two spring pins, and six viton "O"-rings are included.



◆ D08 Parallel Circuit Cover Plate With Gauge Port



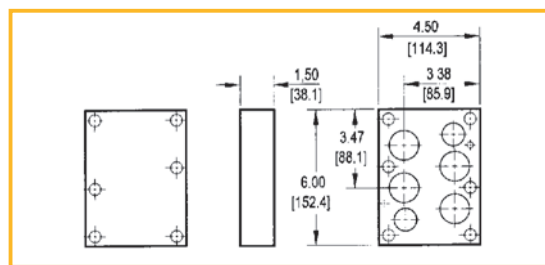
Pressure Rating: Aluminum: 3000 PSI
 Six 1/2"-13 x 1.50 long long cap screws, two spring pins, one pipe plug and six viton "O"-rings are included.



◆ D08 Series Circuit Cover Plate



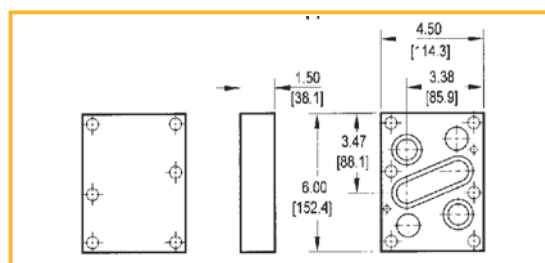
Pressure Rating: Aluminum: 3000 PSI
 Six 1/2"-13 x 2.25 long cap screws, two spring pins, and six viton "O"-rings are included.



◆ D08 Crossover Circuit Cover Plate



Pressure Rating: Aluminum: 3000 PSI
 Six 1/2"-13 x 2.50 long cap screws, two spring pins, and five viton "O"-rings are included.



Ordering Information D08 Cover Plates

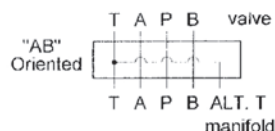
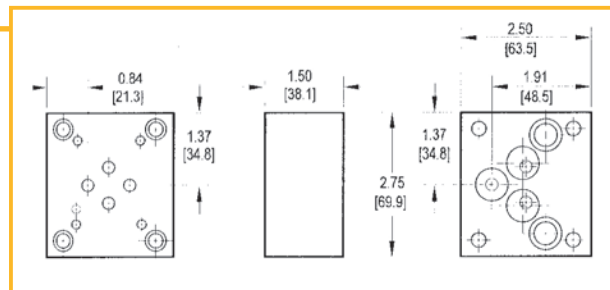
A		D08		CPP		G*	
MATERIAL		PLATE TYPE		GAUGE PORT			
A	6061-T6 Aluminum	CPP	Parallel Circuit	G*	1/4"-18 NPTF	* Available with parallel circuit only. Omit if not required	
SERIES		CPS	Series circuit				
D08	NFPA D08 Valve pattern	COP	Crossover Circuit Cover Plate (P to A, B to T)				

D05 Valve Adaptors

International Directional Valve Interface Size Cross Reference:
 NFPA (USA): Old size:D02, New size:D05
 ISO-4401: Size: 05
 CETOP-R35H: Size: 5
 NG: Size: 10

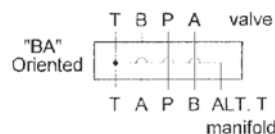
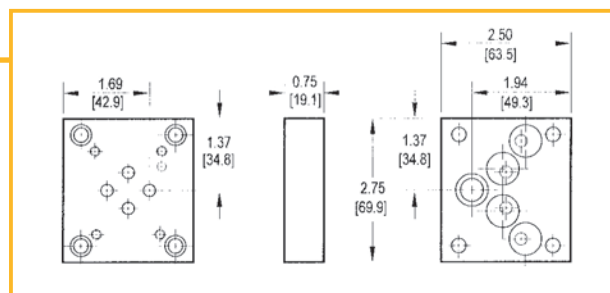
Adapt D03 Valve to D05 Manifold - AB Oriented

- ◆ Pressure Rating: Aluminum: 3000 PSI
- ◆ Valve Mounting: UNC #10-20 x 0.50 DP.
- ◆ Five 014 viton "O"-rings, 4 UNC 1/4"-20 x 1-1/4" long SHCS mounting screws are included.
- ◆ This adaptor permits the installation of a D03 valve on a D05 manifold. This adaptor properly orients the A&B ports on the manifold to the respective valve solenoids.



Adapt D03 Valve to D05 Manifold - BA Oriented

- ◆ Pressure Rating: Aluminum: 3000 PSI
- ◆ Valve Mounting: UNC #10-24 x 0.44 DP.
- ◆ Five 014 viton "O"-rings, 4 UNC 1/4"-20 x 3/4" long SHCS mounting screws are included.
- ◆ This adaptor permits the installation of a D03 valve on a D05 manifold. This adaptor, while low in cost, does not orient the A&B ports on the manifold to the respective valve solenoids.



Ordering Information D05 Valve Adaptors

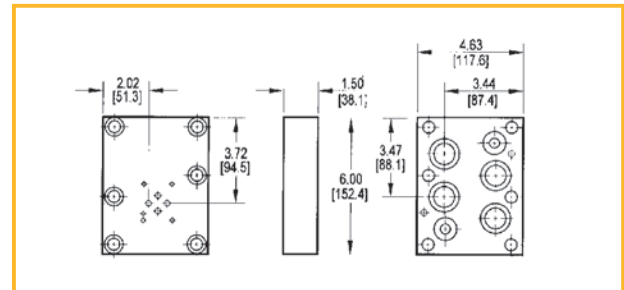
A		D03		D05		VA		AB	
MATERIAL		MANIFOLD PATTERN		PORT ORIENTATION					
A	6061-T6 Aluminum	D05	D05 Manifold pattern	AB	Av common to Am Bv common to Bm			BA	Bv common to Am Av common to Bm
VALVE PATTERN									
D03	D03 Valve pattern								

D08 Valve Adaptors

International Directional Valve
Interface Size Cross Reference:
NFPA(USA): Old size:D06
New size:D08
ISO-4401: Size: 08
CETOP-R35H: Size: 8
NG: Size: 25

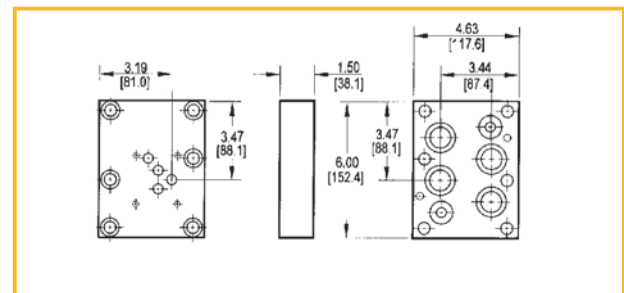
Adapt D03 Valve to D08 Manifold

- ◆ Pressure Rating: Aluminum: 3000 PSI
- ◆ Six 1/2"-13 x 1.50 long cap screws, two spring pins, and six viton "O"-rings are included.

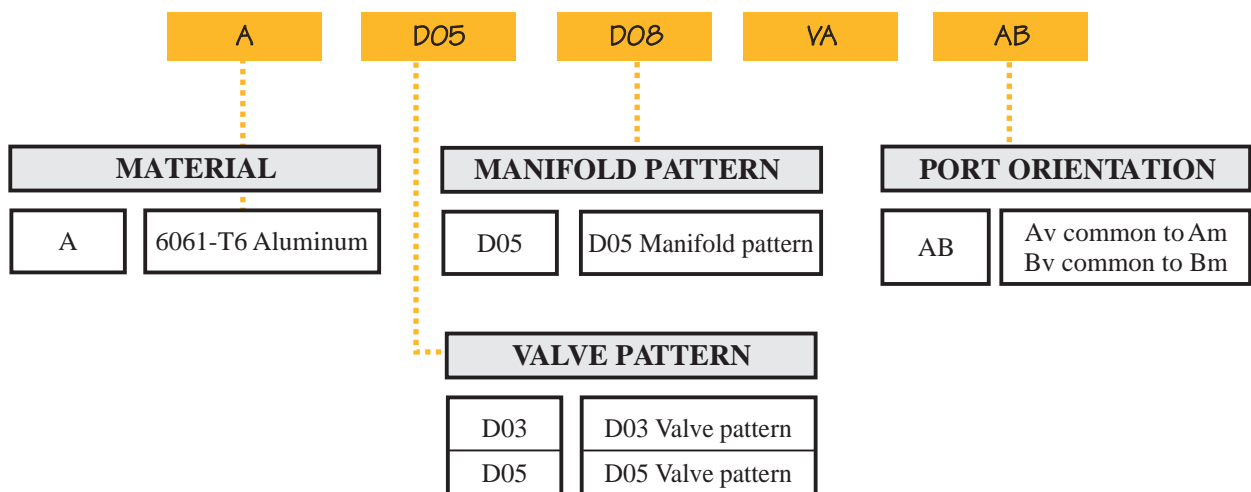


Adapt D05 Valve to D08 Manifold

- ◆ Pressure Rating: Aluminum: 3000 PSI
- ◆ Six 1/2"-13 x 1.50 long cap screws, two spring pins, and six viton "O"-rings are included.



Ordering Information D08 Valve Adaptors



D03 Subplates

International Directional Valve Interface Size Cross Reference:
 NFPA (USA): Old size: D01, New size: D03
 ISO-4401: Size: 03
 CETOP-R35H: Size: 3
 NG: Size: 6

D03 Side & Back Ported Subplates

- ◆ Pressure Rating: Aluminum: 3000 PSI
- ◆ Two 1/4"-20 x 0.88 long cap screws are included.
- ◆ Valve mounting is #10-24 UNC on NPTF & SAE subplates.

Side Ported:

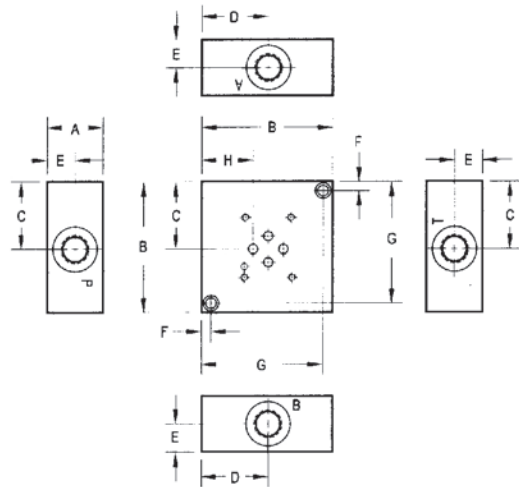
Series	A	B	C	D	E	F	G	H
D03 SP S 4P	1.00	2.50	1.31	1.25	0.50	0.25	2.25	0.88
D03 SP S 6*	1.00	2.50	1.31	1.25	0.50	0.25	2.25	0.88
D03 SP S 8*	1.50	3.50	1.81	1.78	0.75	0.25	3.25	1.38

Back Ported:

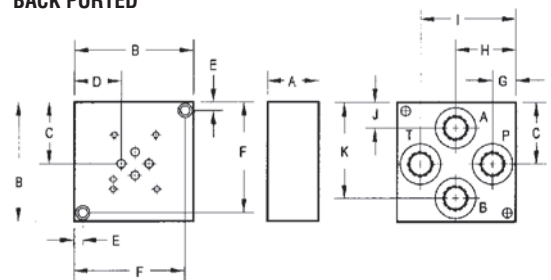
Series	A	B	C	D	E	F
D03 SP B 4P	1.00	2.50	1.31	0.88	0.25	2.25
D03 SP B 6*	1.00	2.50	1.31	0.88	0.25	2.25
D03 SP B 8*	1.50	3.50	1.81	1.38	0.25	3.25

Series	G	H	I	J	K
D03 SP B 4P	0.66	1.28	1.91	0.75	1.88
D03 SP B 6*	0.59	1.28	1.97	0.69	1.94
D03 SP B 8*	0.69	1.78	2.81	0.75	2.81

SIDE PORTED



BACK PORTED



Ordering Information D03 Subplates

A		D03		SP		S		4P	
MATERIAL		PLATE TYPE		PORT LOCATION		PORT THREADS			
A	6061-T6 Aluminum	SP	Subplate			4P	1/4" NPTF		
SERIES						6P	3/8" NPTF		
D03	NFPA D03 Valve pattern			S	Side Ported	6S	-6 SAE		
				B	Back Ported	8P	1/2" NPTF		
						8S	-8 SAE		

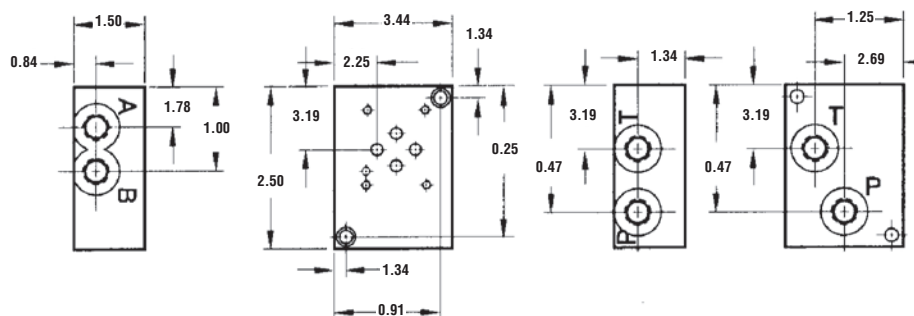
D03 Subplates

International Directional Valve Interface Size Cross Reference:
 NFPA(USA): Old size:D01, New size:D03
 ISO-4401: Size: 03
 CETOP-R35H: Size: 3
 NG: Size: 6

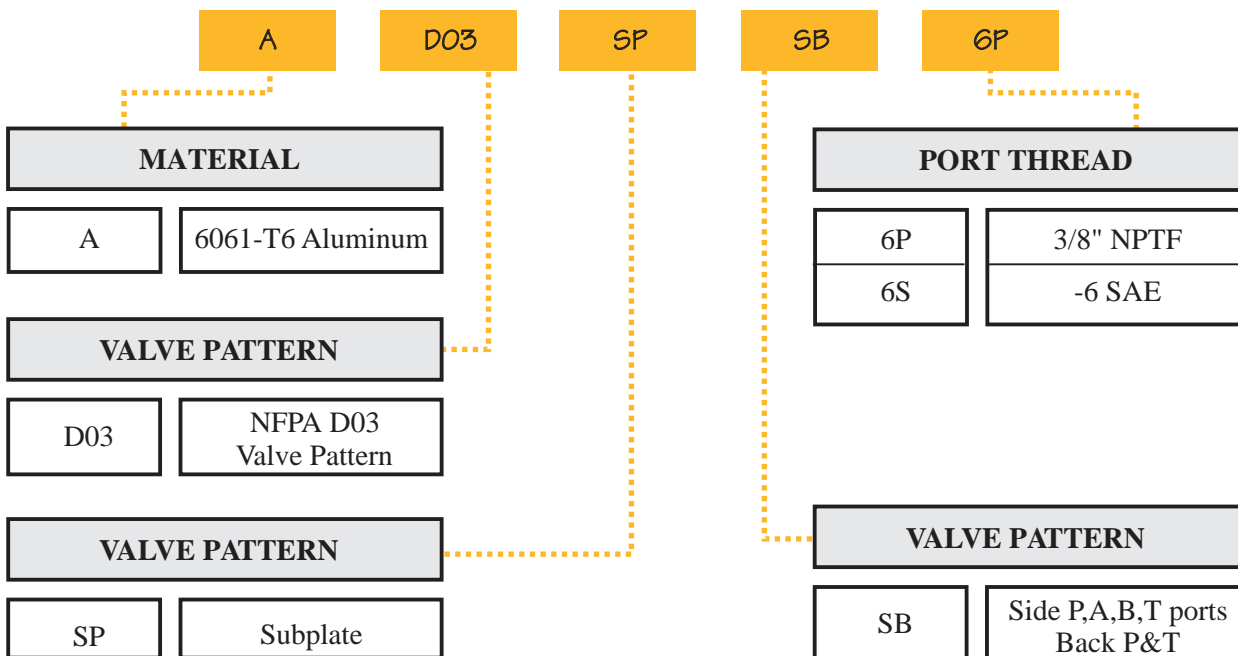
D03 Dual Ported Subplate

Specifications:

- ◆ Pressure Rating: Aluminum: 3000 PSI
- ◆ Two 1/4"-20 x 1.50 long cap screws are included.
- ◆ Valve mounting is #10-24 UNC on NPTF & SAE subplates.
- ◆ Pressure and tank connections may be brought in either the side or back. Two plugs are included to block unused ports.
- ◆ The back-located pressure and tank ports are machined to allow plugs to be installed flush.

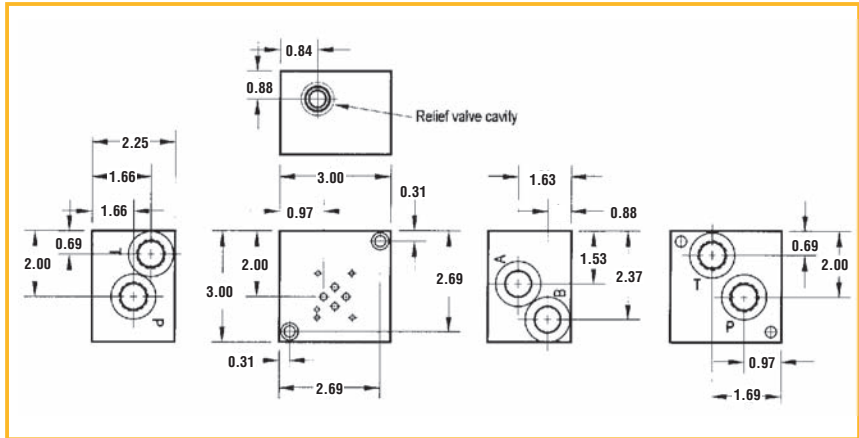


Ordering Information D03 Dual Ported Subplate



D03 Dual Ported Subplate With Relief Cavity

- ◆ The 'common' cavity is machined to specs. for the following manufacturers' cavities:
 Compact Controls: CP10-2
 Delta: 8500-1000
 Fluid Controls: SC-316
 Hydraforce: VC-10-2
 Modular Controls: C-10-2
 Parker: C-10-2
 Sun relief valves are available but must be ordered separately.
 The Sun cavity is machined to specs. for cavity T-10A
 Pressure flows into the nose of the cavity. Tank flow is out the side.



Ordering Information

D03 Dual Ported Subplate With Relief Cavity

A		D03		SP		RV		C		6P	
MATERIAL											
A	6061-T6 Aluminum										
VALVE PATTERN											
D03	NFPA D03 Valve Pattern										
VALVE PATTERN											
SP	Subplate										
PORTING											
RV	Dual ported with relief cavity										
PORT THREAD											
6P	3/8" NPTF										
6S	-6 SAE										
RELIEF VALVE CAVITY											
C	Common cavity										
S	Sun T-10A cavity										

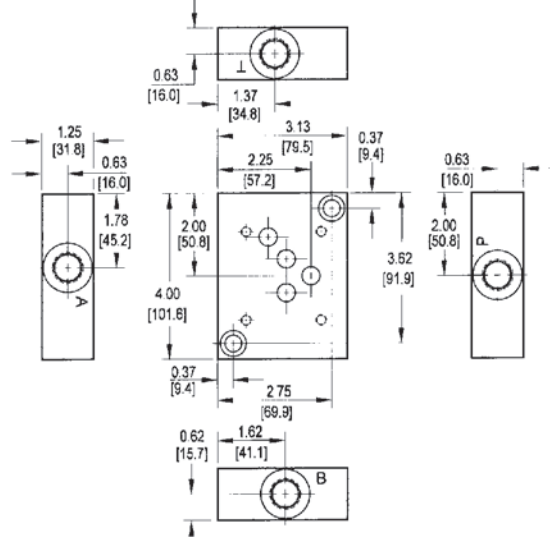
D05 Subplates

International Directional Valve Interface Size Cross Reference:
 NFPA(USA): Old size:D02, New size:D05
 ISO-4401: Size: 05
 CETOP-R35H: Size: 5
 NG: Size: 10

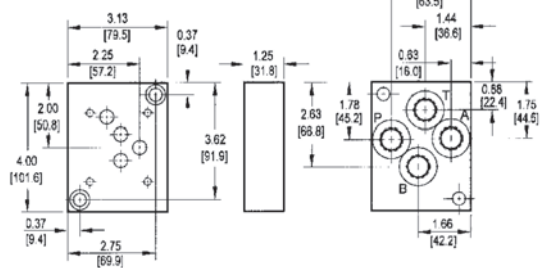
D05 Side & Back Ported Subplates

- ◆ Pressure Rating: Aluminum: 3000 PSI
- ◆ Two 3/8"-16 x 1.25 long cap screws are included.
- ◆ Valve mounting is 1/4"-20 UNC on NPTF & SAE subplates.

SIDE PORTED



BACK PORTED



Ordering Information D05 Subplates

A		D05		SP		S		6P	
MATERIAL		PLATE TYPE		PORT THREADS					
A	6061-T6 Aluminum	SP	Subplate	6P	3/8" NPTF				
				8P	1/2" NPTF				
				8S	-8 SAE				
SERIES		PORT LOCATION							
D05	NFPA D05 Valve pattern	S	Side Ported						
		B	Back Ported						

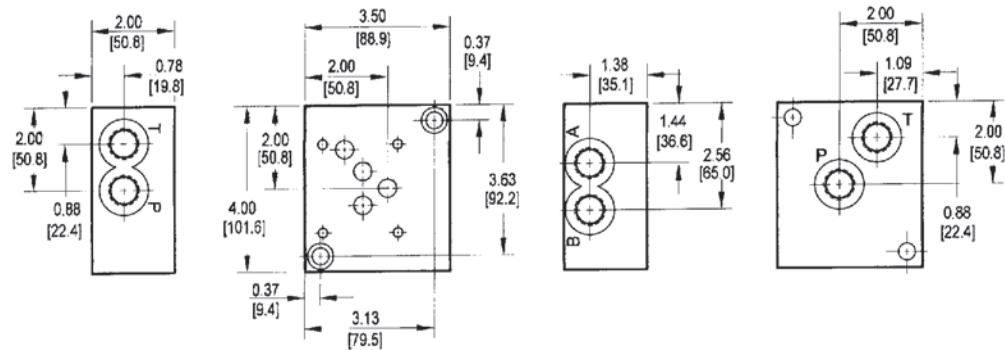
D05 Subplates

International Directional Valve Interface Size Cross Reference:
 NFPA(USA): Old size:D02, New size:D05
 ISO-4401: Size: 05
 CETOP-R35H: Size: 5
 NG: Size: 10

D05 Dual Ported Subplate

Specifications:

- ◆ Pressure Rating: Aluminum: 3000 PSI
- ◆ Two 3/8"-16 x 1.50 long cap screws are included.
- ◆ Valve mounting is 1/4"-20 UNC on NPTF & SAE subplates.
- ◆ Pressure and tank connections may be brought in either the side or back. Two plugs are included to block unused ports.
- ◆ The back-located pressure and tank ports are machined to allow plugs to be installed flush.

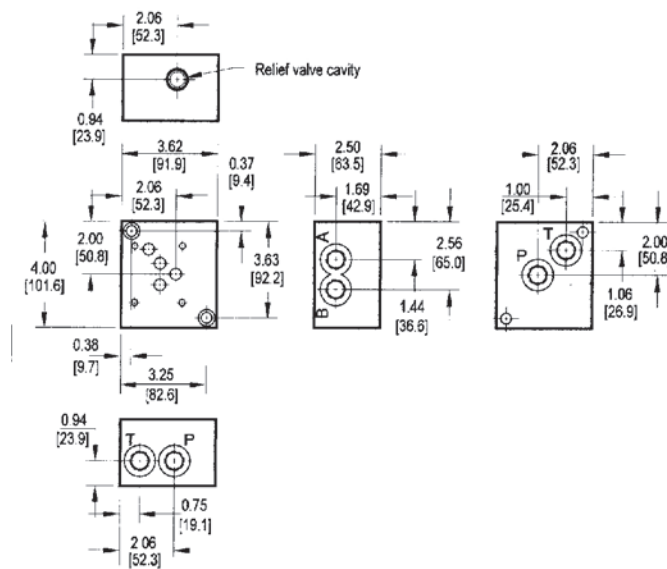


Ordering Information D05 Dual Ported Subplate

A		D05		SP		SB		8P	
MATERIAL								PORT THREAD	
A	6061-T6 Aluminum							8P	1/2" NPTF
VALVE PATTERN								8S	-8 SAE
D05	NFPA D05 Valve Pattern							VALVE PATTERN	
VALVE PATTERN								SB	Dual ported
SP	Subplate								

D05 Dual Ported Subplate With Relief Cavity

- ◆ The 'common' cavity is machined to specs. for the following manufacturers' cavities:
 Compact Controls: CP10-2
 Delta: 8500-1000
 Fluid Controls: SC-316
 Hydraforce: VC-10-2
 Modular Controls: C-10-2
 Parker: C-10-2
 Sun relief valves are available but must be ordered separately.
 The Sun cavity is machined to specs. for cavity T-10A
 Pressure flows into the nose of the cavity. Tank flow is out the side.



Ordering Information

D05 Dual Ported Subplate With Relief Cavity

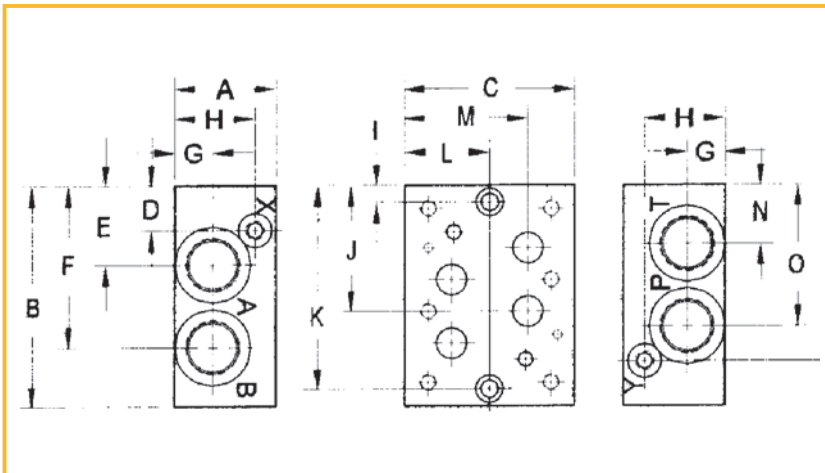
A	D05	SP	RV	C	8P
MATERIAL			PORT THREAD		
A	6061-T6 Aluminum		8P	1/2"-14 NPTF	
			8S	-8 SAE	
VALVE PATTERN			RELIEF VALVE CAVITY		
D05	NFPA D05 Valve Pattern		C	Common cavity	
			S	Sun T-10A cavity	
VALVE PATTERN			PORTING		
SP	Subplate		RV	Dual ported with relief cavity	

D08 Subplates

International Directional Valve Interface Size Cross Reference:
 NFPA (USA): Old size: D06
 New size: D08
 ISO-4401: Size: 08
 CETOP-R35H: Size: 8
 NG: Size: 25

D08 Side Ported Subplate

- ◆ Pressure Rating:
Aluminum: 3000 PSI
- ◆ Two 1/2"-13 x 1.75 long cap screws are included.
- ◆ Valve mounting is 1/2"-13UNC on NPTF & SAE subplates.



Series	A	B	C	D	E	F	G	H	I	J	K	L	M	N	O	P
D08SPSO16*	2.00	6.13	4.50	1.19	2.53	4.53	1.00	1.00	0.50	3.53	5.62	2.25	3.38	1.59	3.59	4.94
D08SPSO20*	3.00	6.50	5.00	1.31	2.33	4.77	1.13	2.38	0.50	3.72	6.00	2.50	3.63	1.73	4.17	5.19

Ordering Information D08 Side Ported Subplate

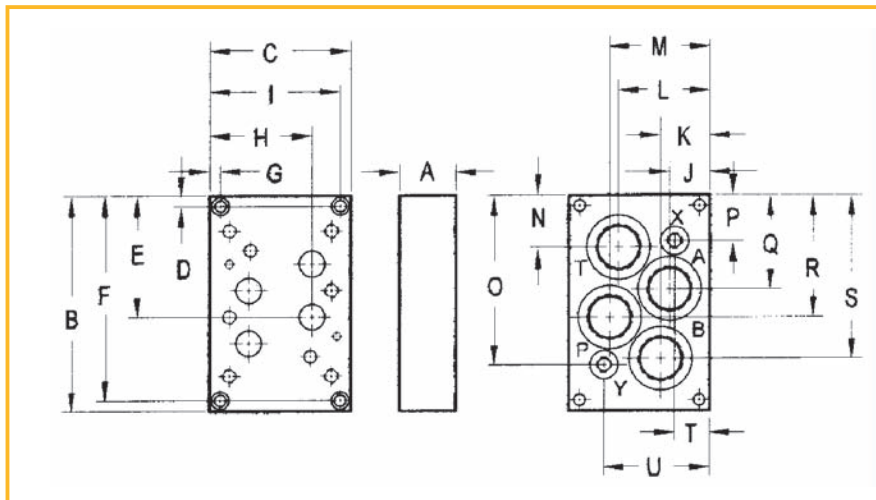
A	D08	SP	S	O	16P
MATERIAL			PORT THREAD		
A	6061-T6 Aluminum		12P 3/4" NPTF P,T,A,B 1/4" NPTF X & Y		
VALVE PATTERN			16P 1" NPTF P,T,A,B 1/4" NPTF X & Y		
D08	NFPA D08 Valve Pattern		16S -16 SAE P,T,A,B -6 SAE X & Y		
PLATE TYPE			20P 1-1/4" NPTF P,T,A,B 1/4" NPTF X & Y		
SP	Subplate		20S -20 SAE ISO 11926 -6 SAE X & Y		
PORT LOCATION			VALVE PATTERN		
S	Side Ported		O Side Tank Port		

D08 Subplates

International Directional Valve Interface Size Cross Reference:
 NFPA (USA): Old size:D06
 New size:D08
 ISO-4401: Size: 08
 CETOP-R35H: Size: 8
 NG: Size: 25

D08 Back Ported Subplate

- ◆ Pressure Rating:
Aluminum: 3000 PSI,
- ◆ Two 1/2"-13 x 1.50 long cap screws are included.



Series	A	B	C	D	E	F	G	H	I	J	K	L	M	N	O	P	Q	R	S	T	U
D08SPB16*	1.50	6.13	4.63	0.50	3.53	5.62	2.31	3.44	--	1.19	1.19	3.44	3.44	1.66	4.94	1.19	2.59	3.53	4.47	1.25	3.38
D08SPB20*	2.00	7.63	5.00	0.38	4.28	7.25	0.38	3.63	4.63	1.44	1.75	3.25	3.56	1.84	6.00	1.63	3.31	4.31	5.78	1.44	3.56

Ordering Information D08 Back Ported Subplate

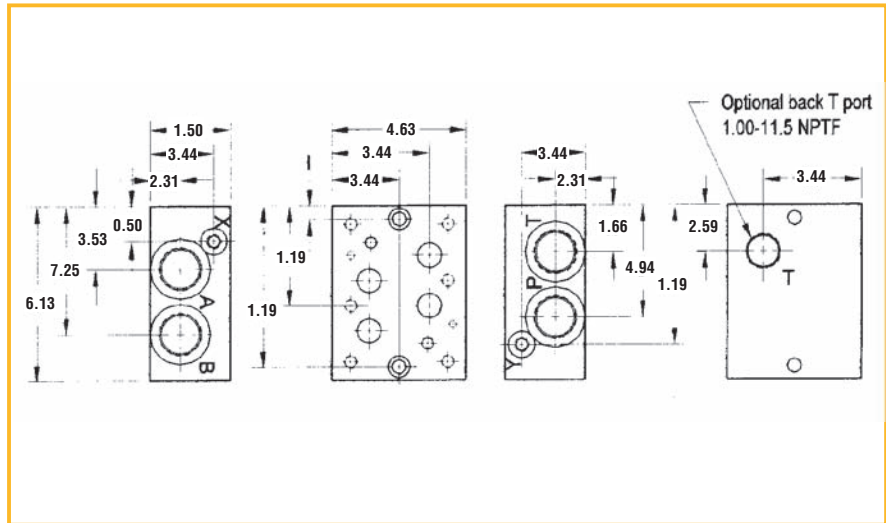
A	D08	SP	B	16P										
MATERIAL		PORT THREAD												
A	6061-T6 Aluminum	<table border="1"> <tr> <td>12P</td> <td>3/4" NPTF P,T,A,B 1/4" NPTF X & Y</td> </tr> <tr> <td>16P</td> <td>1" NPTF P,T,A,B 1/4" NPTF X & Y</td> </tr> <tr> <td>16S</td> <td>-16 SAE P,T,A,B -6 SAE X & Y</td> </tr> <tr> <td>20P</td> <td>1-1/4" NPTF 1/4" NPTF X & Y</td> </tr> <tr> <td>20S</td> <td>-20SAE -6 SAE X & Y</td> </tr> </table>			12P	3/4" NPTF P,T,A,B 1/4" NPTF X & Y	16P	1" NPTF P,T,A,B 1/4" NPTF X & Y	16S	-16 SAE P,T,A,B -6 SAE X & Y	20P	1-1/4" NPTF 1/4" NPTF X & Y	20S	-20SAE -6 SAE X & Y
12P	3/4" NPTF P,T,A,B 1/4" NPTF X & Y													
16P	1" NPTF P,T,A,B 1/4" NPTF X & Y													
16S	-16 SAE P,T,A,B -6 SAE X & Y													
20P	1-1/4" NPTF 1/4" NPTF X & Y													
20S	-20SAE -6 SAE X & Y													
VALVE PATTERN		PORT LOCATION												
D08	NFPA D08 Valve Pattern	<table border="1"> <tr> <td>B</td> <td>Back Ported</td> </tr> </table>			B	Back Ported								
B	Back Ported													
VALVE PATTERN														
SP	Subplate													

D08 Subplates

International Directional Valve Interface Size Cross Reference:
 NFPA (USA): Old size:D06
 New size:D08
 ISO-4401: Size: 08
 CETOP-R35H: Size: 8
 NG: Size: 25

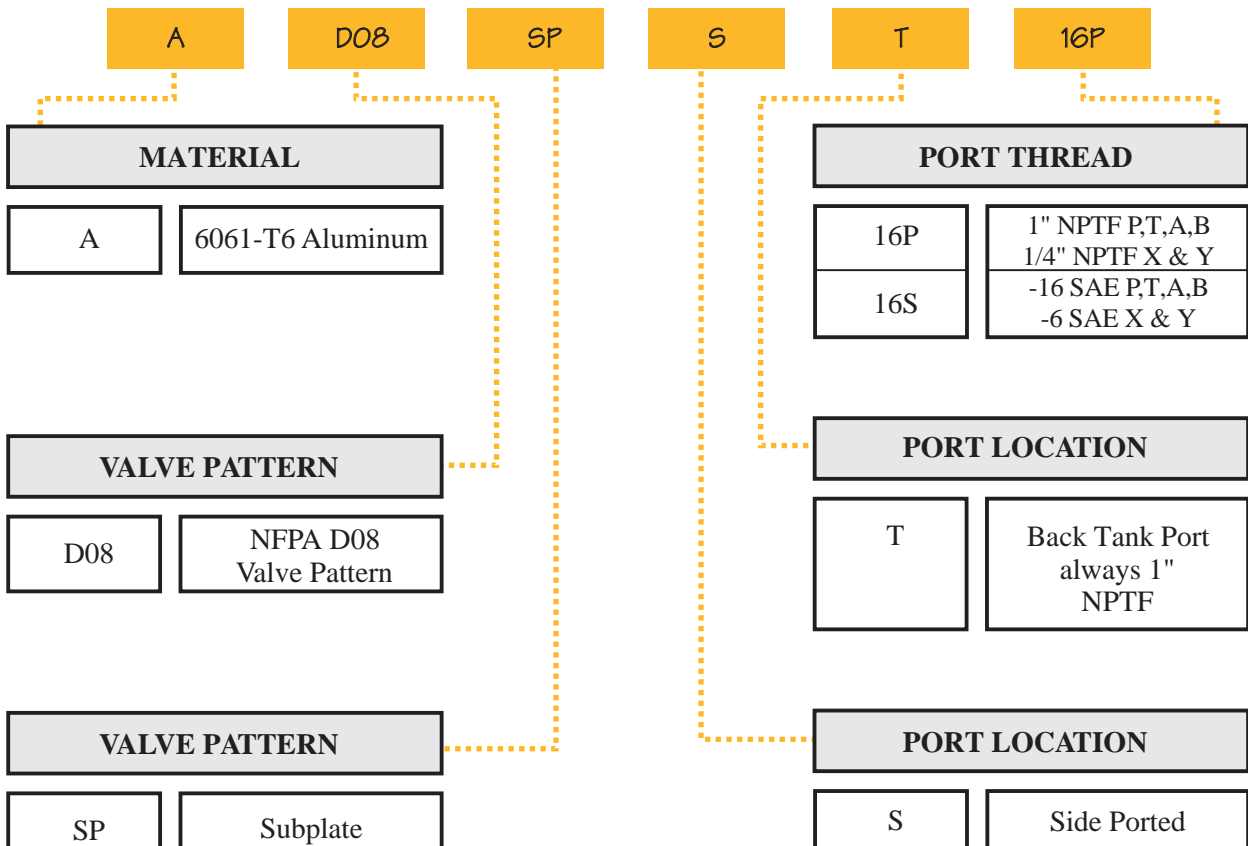
D08 Side Ported Subplate With Back Tank Port

- ◆ Pressure Rating:
 Aluminum: 3000 PSI,
 Ductile Iron: 5000 PSI
- ◆ Two 1/2"-13 x 1.75 long socket head cap screws are included
 The tank port is always 1" NPTF.
- ◆ This subplate with ports other than NPTF or SAE is a custom product



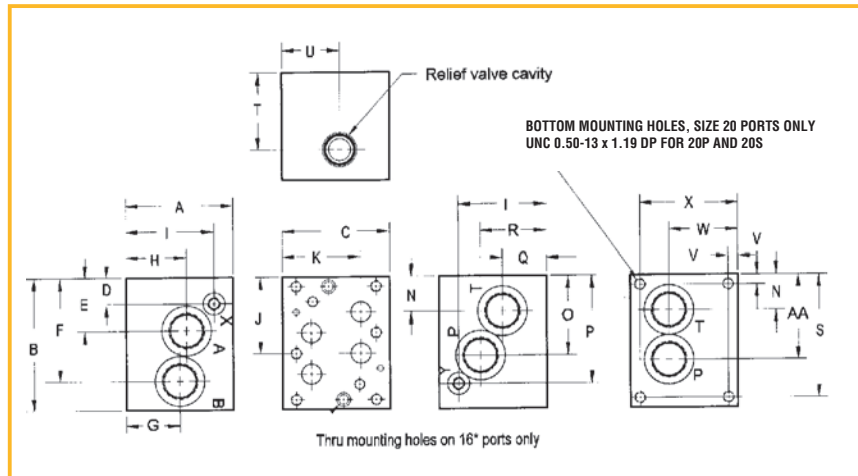
Ordering Information

D08 Side Ported Subplate With Back Tank Port



D08 Dual Ported Subplate With Relief Cavity

- ◆ The 'common' cavity is machined to specs. for the following manufacturers' cavities:
Compact Controls: CP10-2
Delta: 8500-1000
Fluid Controls: SC-316
Hydraforce: VC-10-2
Modular Controls: C-10-2
Parker: C-10-2
- ◆ Sun relief valves are available but must be ordered separately.
- ◆ The Sun cavity is machined to specs. for cavity T-3A
- ◆ Pressure flows into the nose of the cavity. Tank flow is out the side.



Series	A	B	C	D	E	F	G	H	I	J	K	L	M
D08SPRVC16*	3	6	4.5	0.91	2.41	4.53	1.87	1.87	1.25	3.47	3.38	1.68	2.56
D08SPRVS16*	3	6	4.5	0.91	2.41	4.53	1.87	1.87	1.25	3.47	3.38	1.68	2.56

Series	N	O	P	Q	R	T	U	W	Y	Z	AA
D08SPRVC16*	1.47	3.59	5.09	1.87	1.87	1.25	2.47	3.5	0.44	5.56	3.59
D08SPRVS16*	1.47	3.59	5.09	1.87	1.87	1.87	2.81	3.5	0.44	5.56	3.59

Ordering Information

D08 Dual Ported Subplate With Relief Cavity

A	D08	SP	RV	C	16P
MATERIAL			PORT THREAD		
A	6061-T6 Aluminum		16P	1" NPTF P,T,A,B 1/4" NPTF X & Y	
			16S	-16 SAE P,T,A,B -6 SAE X & Y	
VALVE PATTERN			RELIEF VALVE CAVITY		
D08	NFPA D08 Valve Pattern		C	Common cavity	
			S	Sun T-3A cavity	
PLATE TYPE			CIRCUIT		
SP	Subplate		RV	Dual ported with relief cavity	