

Hydraulic Gear Pump AP-0



DESCRIPTION

- AP-0 is an all aluminum construction, high pressure Mini Hydraulic Gear Pump. The standard mounting flange is as detailed on the installation drawing and porting is any combination of rear, front or side as defined in the ordering example.



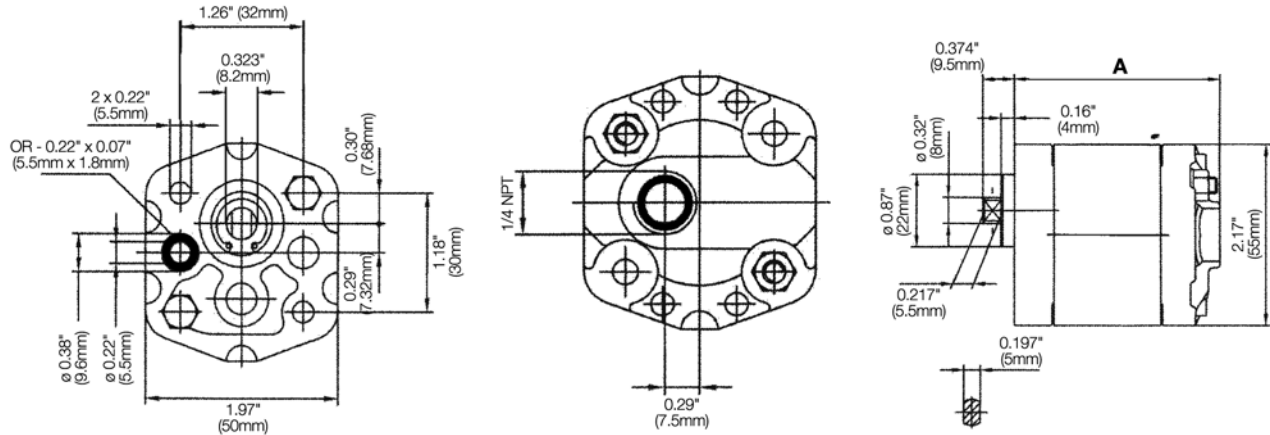
TECHNICAL DATA

- Filtration: 25 micron or better
- Oil Viscosity: 20 mm²/s - 100mm²/s
- Inlet Pressure: 12 to 32 psi absolute
- Temperature: Oil: -25°C to 80°C / -12°F to 175°F
Ambient: -22°C to 55°C / -8°F to 130°F

Model	Displacement		Rated Pressure		Speed RPM		Weight	
	cm ³ /rev	cu.in/rev	PSI	BAR	Min.	Max.	Lbs.	Kg
AP-0-0.16	0.16	0.009	2900	200	800	6000	0.82	0.37
AP-0-0.25	0.25	0.015	2900	200	800	6000	0.84	0.38
AP-0-0.50	0.50	0.030	2900	200	800	6000	0.87	0.39
AP-0-0.75	0.75	0.045	2900	200	800	6000	0.91	0.41
AP-0-1.00	1.00	0.060	2900	200	800	6000	0.92	0.42
AP-0-1.25	1.25	0.080	2900	200	800	5000	1.00	0.45
AP-0-1.50	1.50	0.090	2900	200	800	5000	1.04	0.47
AP-0-1.75	1.75	0.110	2320	160	800	4500	1.08	0.49
AP-0-2.00	2.00	0.120	2320	160	800	4500	1.13	0.51

- Flow rate in gpm - Displacement (cu.in/rev) X speed (rpm)/231
- Volumetric efficiency % >93

INSTALLATION DATA



Model	A	
	mm	inch
AP-0-0.16	60	2.36
AP-0-0.25	61	2.40
AP-0-0.50	63	2.48
AP-0-0.75	65	2.55
AP-0-1.00	68	2.68

Model	A	
	mm	inch
AP-0-1.25	70	2.75
AP-0-1.50	72	2.83
AP-0-1.75	75	2.95
AP-0-2.00	77	3.03

ORDERING INFORMATION

