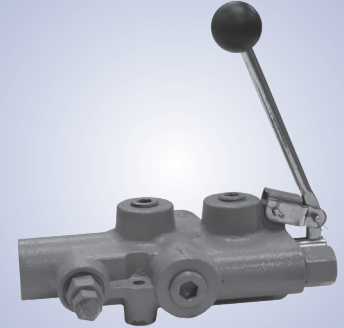


SPECIFICATIONS

■ Construction	Cast iron body, Chrome-plated spool
■ Flow	Up to 25 gpm
■ Adjustable Relief Valve Pressure	0-2900 psi
■ Adjustable Detent Release Pressure	1000-2000 psi
■ Pressure Drop (P to A or B)	43 psi at 20 gpm
■ Pressure Drop (P to T)	12 psi at 20 gpm
■ Pressure and Tank Ports	3/4" NPT
■ Work ports (A and B)	1/2" NPT

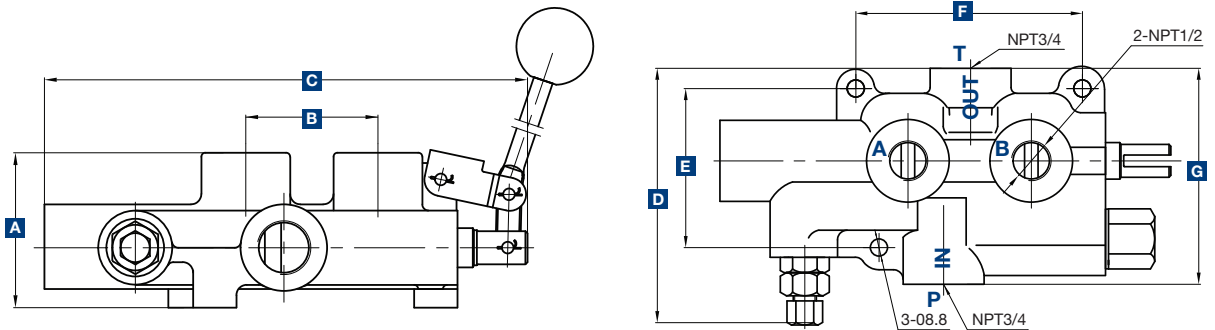
Log Splitter Valve

1



MODEL ALS

DIMENSIONS



Model	A (in)	B (in)	C (in)	D (in)	E (in)	F (in)	G (in)	Wt (lbs)
ALS-3000	3.03	2.60	9.21	5.20	3.25	4.63	4.57	11.00

ORDERING INFORMATION

ALS

3000

Log Splitter
Valve
Series

ALS-3000 LOG SPLITTER SCHEMATIC

