

LPH 630

**Maximum pressure 10 bar
Flow rates to 800 l/min**



Technical data

Filter housing (Materials)

- Body: Phosphated Steel
- Head: Anodized Aluminium
- Bypass valve: Steel

Pressure

- Working pressure: 10 bar (1 MPa)

Temperature

- From -25 °C to +110 °C

Bypass valve

- Opening pressure 1,75 bar $\pm 10\%$
- Opening pressure 2,5 bar $\pm 10\%$

Δp Elements type

- Microfibre filter elements series MR: 10 bar
- Fluid flow through the filter element from IN to OUT.

Seals

- Standard NBR series A
- Optional FPM series V

LPH 630 FILTERS ARE PROVIDED FOR VERTICAL MOUNTING

Weights (kg)

- LPH630 26,8

Volumes (dm³)

- LPH630 15

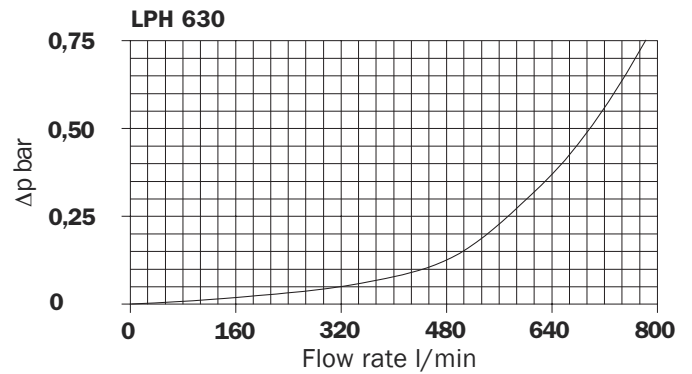
Connections

- LPH 630: In-line Inlet/Outlet

Filter housings Δp pressure drop

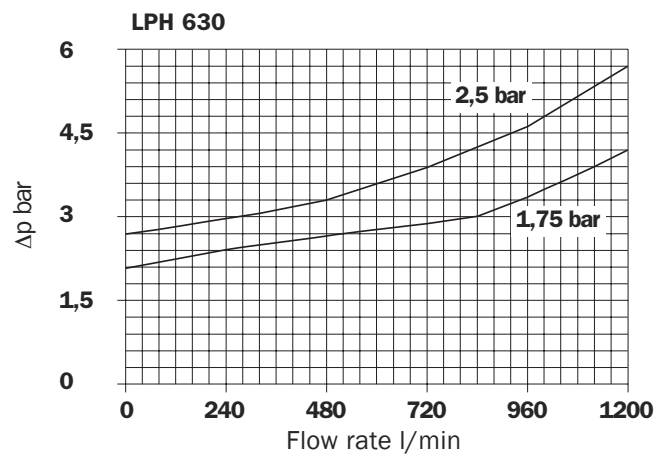
The curves are plotted utilising mineral oil with density of 0,86 kg/dm³ to ISO 3968.

Δp varies proportionally with density.



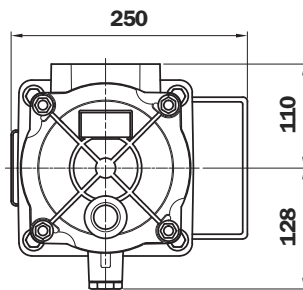
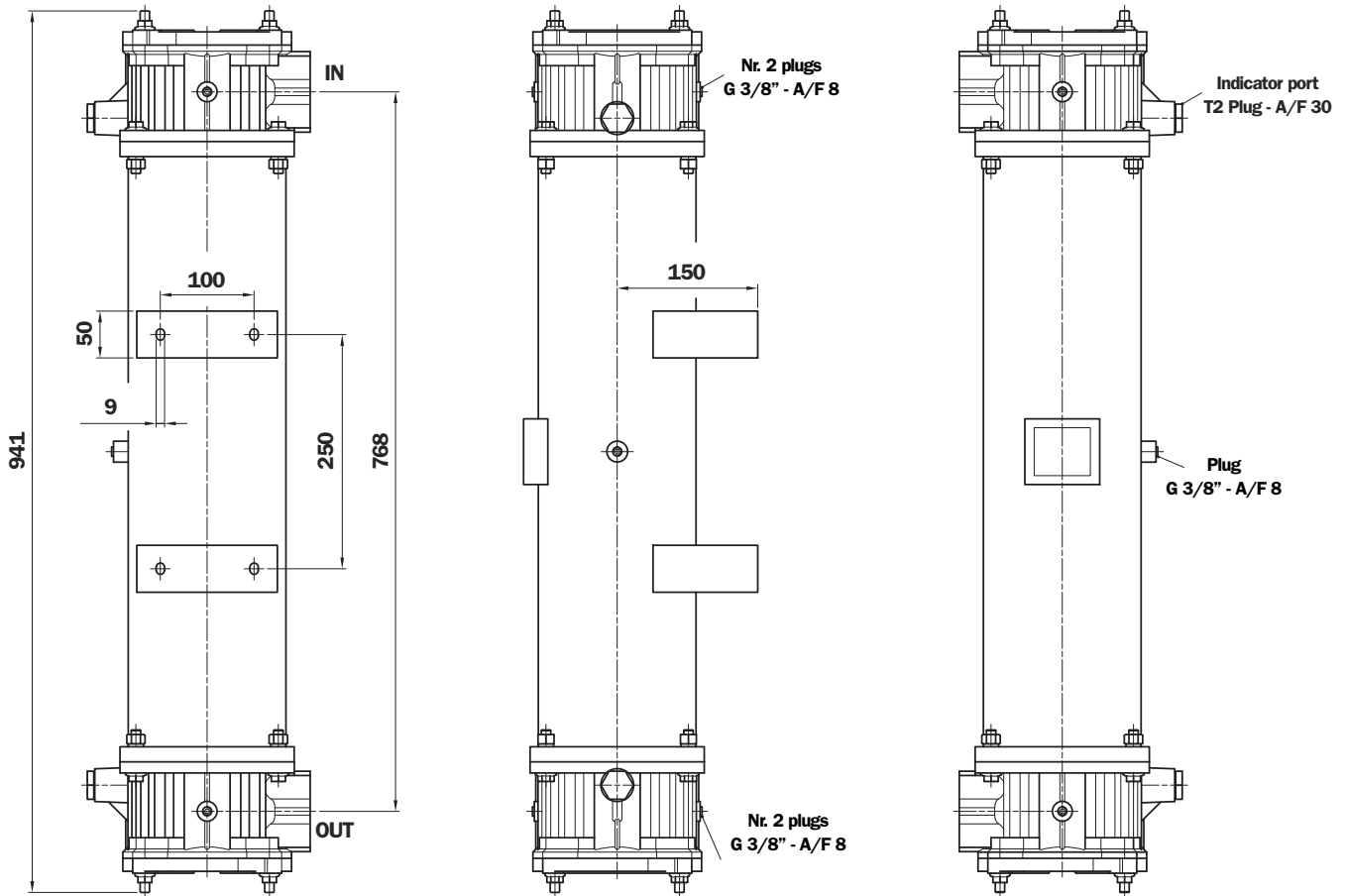
Valves

Bypass valve pressure drop



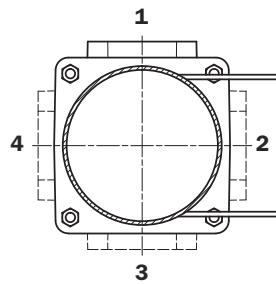
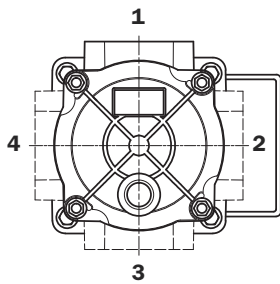
IN-LINE FILTER

LPH 630



Position connection IN

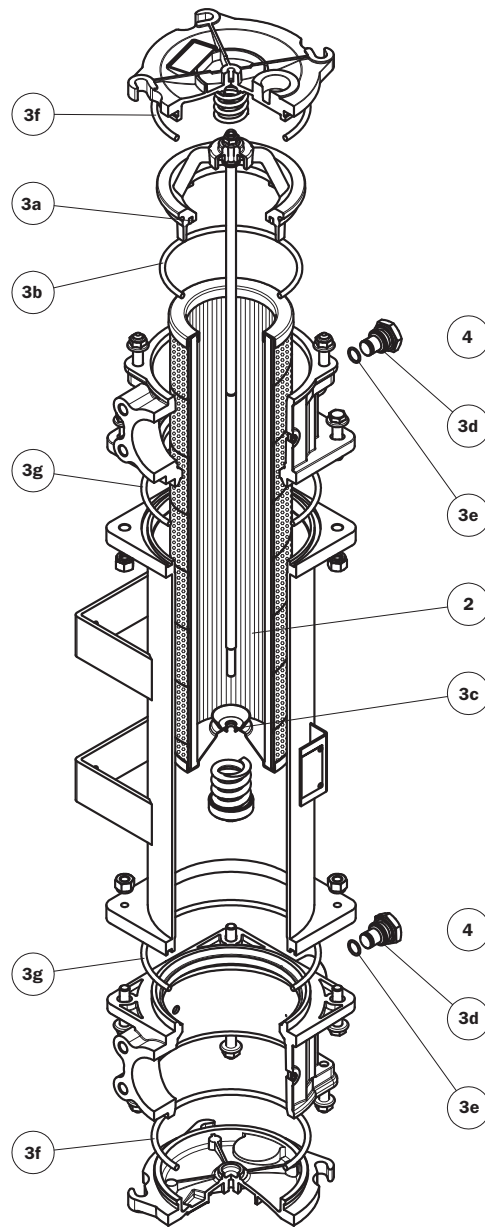
Position connection OUT



Flange IN - OUT connections

Type	Size
F1	2 1/2" SAE 3000 psi/M
F3	2 1/2" SAE 3000 psi/UNC

Spare parts



Item	Description	Q.ty	FILTER Series LPH 630	
1	Filter assembly	1	See order table	
2	Filter element	1	See order table	
3	Seal Kit	1	NBR 02050640	FPM 02050641
3a	Insert assembly internal seal	1	01026228 (HNBR)	01026229 (FPM)
3b	Insert assembly internal seal	1	O-R 210 Ø 133,40 x 5,34	
3c	Filter element seal	1	O-R 112 Ø 9,92 x 2,62	
3d	Gasket	2	01030058 (HNBR)	01030046 (FPM)
3e	O-Ring	2	O-R 2050 Ø 12,42 x 1,78	
3f	O-Ring	2	ORM Ø 149,3 x 5,7	
3g	O-Ring	2	O-R 6670 Ø 170,82 x 5,34	
4	Indicator connection plug	1	T2H	T2V

Ordering information LPH 630

Filter assembly LPH

	1	2	3	4	5	6	7a	8	9	10
	<input type="text"/>	<input type="text"/>	<input type="text"/>	<input type="text"/>	<input type="text"/>	<input type="text"/>	<input type="text"/>	<input type="text"/>	<input type="text"/>	<input type="text"/>
Example: LPH	630	7	E	E	1	1	A	F1	A10	P01

Filter element MR

	1	2	9	7b	10
	<input type="text"/>	<input type="text"/>	<input type="text"/>	<input type="text"/>	<input type="text"/>
Example: MR	630	7	A10	A	P01

1 - Style

Filter	Filter element
<input type="text" value="630"/>	<input type="text" value="630"/>

2 - Filter length

<input type="text" value="630"/>	<input type="text" value="7"/>
----------------------------------	--------------------------------

3 - Valves

<input type="text" value="S"/>	Without bypass
<input type="text" value="C"/>	1,75 bar
<input type="text" value="E"/>	2,5 bar

4 - Valves

<input type="text" value="O"/>	With magnetic column
<input type="text" value="E"/>	Without magnetic column

5 - IN port

<input type="text" value="1"/>
<input type="text" value="2"/>
<input type="text" value="3"/>
<input type="text" value="4"/>

6 - OUT port

<input type="text" value="1"/>
<input type="text" value="2"/>
<input type="text" value="3"/>
<input type="text" value="4"/>

7 - Filter seals & Treatment

7a - Filter assembly

<input type="text" value="A"/>	NBR
<input type="text" value="V"/>	FPM
<input type="text" value="W"/>	NBR, Head anodized - filter element compatible with fluid HFA, HFB, HFC (only for filter element type Axx and Mxx)
<input type="text" value="Z"/>	FPM, Head anodized - filter element compatible with fluid HFA, HFB, HFC (only for filter element type Axx and Mxx)

7b - Filter element

<input type="text" value="A"/>	NBR
<input type="text" value="V"/>	FPM

8 - Connections

Flange

Type	Size
F1	2 1/2" SAE 3000 psi/M
F3	2 1/2" SAE 3000 psi/UNC

9 - Filter element

<input type="text" value="A03"/>	Inorganic microfibre 3 µm	Absolute filtration Inorganic Microfibre βx (c) ≥ 1000
<input type="text" value="A06"/>	Inorganic microfibre 6 µm	
<input type="text" value="A10"/>	Inorganic microfibre 10 µm	
<input type="text" value="A16"/>	Inorganic microfibre 16 µm	
<input type="text" value="A25"/>	Inorganic microfibre 25 µm	Nominal Filtration
<input type="text" value="M25"/>	Wire mesh 25 µm	
<input type="text" value="M60"/>	Wire mesh 60 µm	Nominal Filtration
<input type="text" value="P10"/>	Resin - Impregnated paper	
<input type="text" value="P25"/>	Resin - Impregnated paper	

10 - Option

<input type="text" value="P01"/>	MP Filtri standard
----------------------------------	--------------------

For Operating & Maintenance:

- Operating see In-Line filter "LMP"
- Maintenance see Return filter "MPH"

Use Differential Clogging Indicator

For Clogging Indicator:
See page 324

MP Filtri - The filter functions as described in this bulletin are valid exclusively for original MP Filtri filter elements and replacement parts. All rights reserved.

The data in this publication are purely guideline. MP Filtri reserves the right to make changes to the models described herein at any time it deems fit in relation to technical or commercial requirements. The colours of the products shown on the cover are purely guideline. Copyright. All rights reserved.