

Service Parts List

VPA10V(S)O Series 31

ANFIELD Service Parts List VPA10V(S)O Series 31 - Rev. - (11/17/2025)



Strength in Products,
Strength in Service

TABLE OF CONTENTS

ASSEMBLY DIAGRAM2

VPA10V(S)O SERIES 31 PARTS BREAKDOWN3-13

Size 183

Size 284-5

Size 456-7

Size 718-9

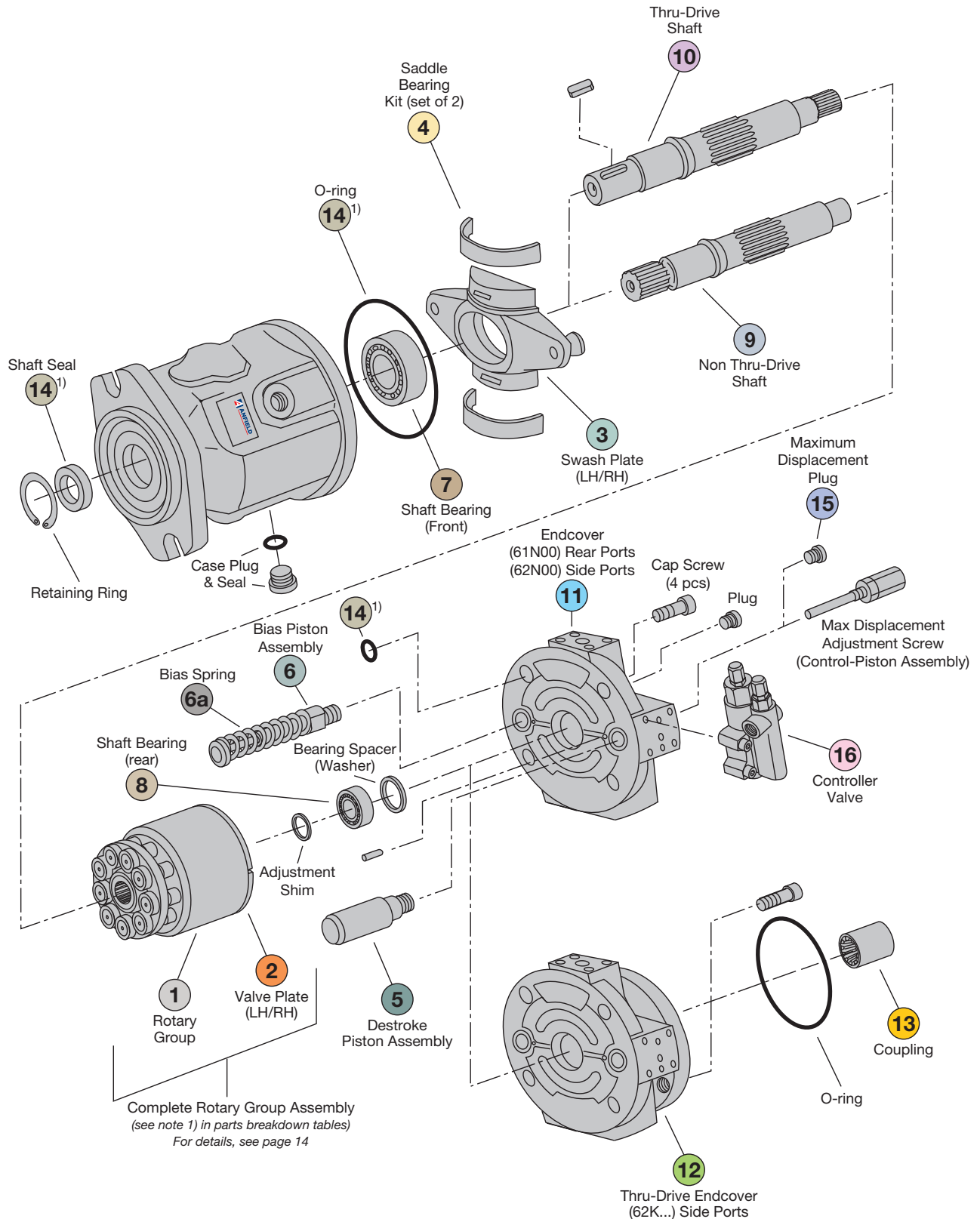
Size 10010-11

Size 14012-13

PISTON PUMP ROTARY GROUP ASSEMBLY DIAGRAM 14



ASSEMBLY DIAGRAM



Notes:

1) Part of the seal kit.

Parts are fully interchangeable with Rexroth® A10V(S)O series 31

ANFIELD Service Parts List VPA10V(S)O Series 31 - Rev. - (11/17/2025)

SIZE 18 PARTS BREAKDOWN

VPA10V(S)O Series 31

ITEM	STOCK CODE	PART NUMBER	DESCRIPTION & NOTES	QTY
1	3S011200	A10VSO18 ROTARY GROUP¹⁾	See note 1)	1
1a	◆	A10VSO18 PISTON/SHOE ASSY (EA.) ⁴⁾	Subassembly of item 1	9 REQ.
1b	◆	A10VSO18 RETAINING PLATE ⁴⁾	Subassembly of item 1	1
1c	◆	A10VSO28 RETAINING BALL ⁴⁾	Subassembly of item 1	1
1d	◆	A10VSO18 CYLINDER BLOCK ⁴⁾	Subassembly of item 1	1
1e	◆	A10VSO18 PRESSURE PIN (SET) ⁴⁾	Subassembly of item 1	3 REQ.
1f	◆	A10VSO18 SPRING RETAINING DISC ⁴⁾	Subassembly of item 1	1
1g	◆	A10VSO18 ROT GRP SPRING ⁴⁾	Subassembly of item 1	1
1h	◆	A10VSO18 ROT GRP RETAINING RING ⁴⁾	Subassembly of item 1	1
2a	3S010500	A10VSO18 VALVE PLATE RH	See note 1) - aka Lens plate	1
2b	3S010600	A10VSO18 VALVE PLATE LH	See note 1) - aka Lens plate	1
3a	3S010700	A10VSO18 SWASHPLATE RH	Swashplate assembly for RH pump (aka Cradle assembly)	1
3b	3S010800	A10VSO18 SWASHPLATE LH	Swashplate assembly for LH pump (aka Cradle assembly)	1
4	3S010050	A10VSO18 SADDLE BEARING KIT	Swashplate bearings (Set of 2) – aka cradle or saddle bearings	1
5	3S012040	A10VSO18 DESTROKE PISTON ASSY	Control-Piston Assembly (Destroke)	1
6	3S012042	A10VSO18 BIAS PISTON ASSY	Control-Piston Assembly (Upstroke)	1
6a	3S012048	A10VSO18 BIAS SPRING	Bias spring for the bias piston assembly (item 6)	1
7	3S012020	A10VSO18 SHAFT BEARING FRONT	Front tapered-roller bearing (large)	1
8	3S012030	A10VSO18 SHAFT BEARING REAR	Rear tapered-roller bearing (small)	1
9a	3S010120	A10VSO18 KEYED SHAFT K	3/4" keyed shaft (for 61N00 and 62N00 pumps)	1
9b	3S010220	A10VSO18 SPLINE SHAFT S	3/4" 11T spline shaft (for 61N00 and 62N00 pumps)	1
9c	3S010300	A10VSO18 SPLINE SHAFT U	5/8" 9T spline shaft (for 61N00 and 62N00 pumps)	1
9d	◆	A10VSO18 KEYED SHAFT P	18mm keyed Shaft (for 61N00 and 62N00 pumps)	1
10a	3S010100	A10VSO18 KEYED SHAFT K THRU	3/4" Thru-drive keyed shaft (for 62K... pumps)	1
10b	3S010200	A10VSO18 SPLINE SHAFT S THRU	3/4" 11T Thru-drive spline shaft (for 62K... pumps)	1
10c	◆	A10VSO18 SPLINE SHAFT U THRU³⁾	5/8" 9T Thru-drive spline shaft (for 62K... pumps)	1
10d	◆	A10VSO18 KEYED SHAFT P THRU	18mm Thru-drive keyed shaft (for 62K... pumps)	1
11a	3S010900	A10VSO18 ENDCOVER RH (62N00)	RH pump endcover with side ports	1
11b	3S011000	A10VSO18 ENDCOVER LH (62N00)	LH pump endcover with side ports	1
12a	3S010810	A10VSO18 THRU DRIVE ENDCOVER RH (62K01/K52)	82-2 (SAE A) thru-drive mounting flange (RH pump) axial	1
12b	◆	A10VSO18 THRU DRIVE ENDCOVER LH (62K01/K52)	82-2 (SAE A) thru-drive mounting flange (LH pump) axial	1
13a	3S011300	A10VSO18 COUPLING K01	5/8 in 9T 16/32DP (SAE A) splined shaft coupling w/ axial limit	1
13b	◆	A10VSO18 COUPLING K52	3/4 in 11T 16/32DP (SAE A-B) splined shaft coupling w/ axial limit	1
14a	3S011100	A10VSO18 SEAL KIT NITRILE	Buna-N seal kit	1
14b	3S009900	A10VSO18 SEAL KIT VITON	FKM Fluorocarbon Viton® seal kit	1
15	3S012044	A10VSO18-28 MAX DISP PLUG²⁾	See note 2)	1
16a	3S013402	DR CONTROLLER SIZE 18-100 NEW	Pressure control (For sizes 18 through 100)	1
16b	3S013000	DRG CONTROLLER SIZE 18-100	Pressure remote control (For sizes 18 through 100)	1
16c	3S013300	DFR CONTROLLER SIZE 18-100	Pressure and flow control (w/ bleed down) (For sizes 18 through 100)	1
16d	3S013100	DFR1 CONTROLLER SIZE 18-100	Pressure and flow control (bleed down orifice plugged) (For sizes 18 through 100)	1

Notes:

Parts with no stock code (denoted by ◆) are subject to availability. Please contact Anfield for more information.

1) To order a complete rotary group, the valve plate (2a or 2b) must be ordered separately depending on the pump's rotation. (example for RH pump order items 1 & 2a)

2) Plug required when removing the mechanical stroke limiter. Converting A10VSO to A10VO. (Industrial to mobile)

3) U shaft is a reduced diameter spline and not recommended for through drive. Torque requirement of second pump must be considered before ordering.

4) Items 1a through 1h as individual items may not be stock items. Please contact Anfield sales before ordering. The complete rotary group (item 1) is a stock item.

SIZE 28 PARTS BREAKDOWN

VPA10V(S)O Series 31

ITEM	STOCK CODE	PART NUMBER	DESCRIPTION & NOTES	QTY
1	3S021100	A10VSO28 ROTARY GROUP¹⁾	See note 1)	1
1a	◆	A10VSO28 PISTON/SHOE ASSY (EA.) ⁴⁾	Subassembly of item 1	9 REQ.
1b	◆	A10VSO28 RETAINING PLATE ⁴⁾	Subassembly of item 1	1
1c	◆	A10VSO28 RETAINING BALL ⁴⁾	Subassembly of item 1	1
1d	◆	A10VSO28 CYLINDER BLOCK ⁴⁾	Subassembly of item 1	1
1e	◆	A10VSO28 PRESSURE PIN (SET) ⁴⁾	Subassembly of item 1	3 REQ.
1f	◆	A10VSO28 SPRING RETAINING DISC ⁴⁾	Subassembly of item 1	1
1g	◆	A10VSO28 ROT GRP SPRING ⁴⁾	Subassembly of item 1	1
1h	◆	A10VSO28 ROT GRP RETAINING RING ⁴⁾	Subassembly of item 1	1
2a	3S020200	A10VSO28 VALVE PLATE RH	See note 1) - aka Lens plate	1
2b	3S020100	A10VSO28 VALVE PLATE LH	See note 1) - aka Lens plate	1
3a	3S020500	A10VSO28 SWASHPLATE RH	Swashplate assembly for RH pump (aka Cradle assembly)	1
3b	3S020600	A10VSO28 SWASHPLATE LH	Swashplate assembly for LH pump (aka Cradle assembly)	1
4	3S020050	A10VSO28 SADDLE BEARING KIT	Swashplate bearings (Set of 2) – aka cradle or saddle bearings	1
5	3S022110	A10VSO28 DESTROKE PISTON ASSY	Control-Piston Assembly (Destroke)	1
6	3S022112	A10VSO28 BIAS PISTON ASSY	Control-Piston Assembly (Upstroke)	1
6a	3S022116	A10VSO28 BIAS SPRING	Bias spring for the bias piston assembly (item 6)	1
7	3S022000	A10VSO28 SHAFT BEARING FRONT	Front tapered-roller bearing (large)	1
8	3S022100	A10VSO28 SHAFT BEARING REAR	Rear tapered-roller bearing (small)	1
9a	3S020320	A10VSO28 KEYED SHAFT K	7/8" keyed Shaft (for 61N00 and 62N00 pumps)	1
9b	3S020420	A10VSO28 SPLINE SHAFT S	7/8" 13T spline shaft (for 61N00 and 62N00 pumps)	1
9c	◆	A10VSO28 KEYED SHAFT P	22mm keyed shaft (for 61N00 and 62N00 pumps)	1
10a	3S020300	A10VSO28 KEYED SHAFT K THRU	7/8" Thru-drive keyed shaft (for 62K... pumps)	1
10b	3S020400	A10VSO28 SPLINE SHAFT S THRU	7/8" 13T Thru-drive spline shaft (for 62K... pumps)	1
10c	◆	A10VSO28 KEYED SHAFT P THRU	22mm Thru-drive keyed shaft (for 62K... pumps)	1
11a	◆	A10VSO28 ENDCOVER RH (61N00)	RH pump endcover with rear ports	1
11b	◆	A10VSO28 ENDCOVER LH (61N00)	LH pump endcover with rear ports	1
11c	3S020700	A10VSO28 ENDCOVER RH (62N00)	RH pump endcover with side ports	1
11d	3S020800	A10VSO28 ENDCOVER LH (62N00)	LH pump endcover with side ports	1
12a	3S020810	A10VSO28 THRU DRIVE ENDCOVER RH (62K01/K52)	82-2 (SAE A) thru-drive mounting flange (RH pump) axial seal	1
12b	3S020820	A10VSO28 THRU DRIVE ENDCOVER LH (62K01/K52)	82-2 (SAE A) thru-drive mounting flange (LH pump) axial seal	1
12c	◆	A10VSO28 THRU DRIVE ENDCOVER RH (62K02)	101-2 (SAE B) thru-drive mounting flange (RH pump) radial seal	1
12d	◆	A10VSO28 THRU DRIVE ENDCOVER LH (62K02)	101-2 (SAE B) thru-drive mounting flange (LH pump) radial seal	1
12e	◆	A10VSO28 THRU DRIVE ENDCOVER RH (62K68)	101-2 (SAE B) thru-drive mounting flange (RH pump) axial seal	1
12f	◆	A10VSO28 THRU DRIVE ENDCOVER LH (62K68)	101-2 (SAE B) thru-drive mounting flange (LH pump) axial seal	1

Notes:

Parts with no stock code (denoted by ◆) are subject to availability. Please contact Anfield for more information.

1) To order a complete rotary group, the valve plate (2a or 2b) must be ordered separately depending on the pump's rotation. (example for RH pump order items 1 & 2a)

2) Plug required when removing the mechanical stroke limiter. Converting A10VSO to A10VO. (Industrial to mobile)

3) U shaft is a reduced diameter spline and not recommended for through drive. Torque requirement of second pump must be considered before ordering.

4) Items 1a through 1h as individual items may not be stock items. Please contact Anfield sales before ordering. The complete rotary group (item 1) is a stock item.

Parts are fully interchangeable with Rexroth® A10V(S)O series 31

ANFIELD Service Parts List VPA10V(S)O Series 31 - Rev. - (11/17/2025)

SIZE 28 PARTS BREAKDOWN *(Continued)*

VPA10V(S)O Series 31

ITEM	STOCK CODE	PART NUMBER	DESCRIPTION & NOTES	QTY
13a	3S021300	A10VSO28 COUPLING K01	5/8 in 9T 16/32DP (SAE A) splined shaft coupling w/ axial limit	1
13b	◆	A10VSO28 COUPLING K52	3/4 in 11T 16/32DP (SAE A-B) splined shaft coupling w/ axial limit	1
13c	◆	A10VSO28 COUPLING K02	7/8 in 13T 16/32DP (SAE B) splined shaft coupling no axial limit	1
13d	◆	A10VSO28 COUPLING K68	7/8 in 13T 16/32DP (SAE B) splined shaft coupling w/ axial limit	1
14a	3S020900	A10VSO28 SEAL KIT NITRILE	Buna-N seal kit	1
14b	3S021000	A10VSO28 SEAL KIT VITON	FKM Fluorocarbon Viton® seal kit	1
15	3S012044	A10VSO18-28 MAX DISP PLUG ²⁾	See note 2)	
16a	3S013402	DR CONTROLLER SIZE 18-100 NEW	Pressure control (For sizes 18 through 100)	1
16b	3S013000	DRG CONTROLLER SIZE 18-100	Pressure remote control (For sizes 18 through 100)	1
16c	3S013300	DFR CONTROLLER SIZE 18-100	Pressure and flow control (w/ bleed down) (For sizes 18 through 100)	1
16d	3S013100	DFR1 CONTROLLER SIZE 18-100	Pressure and flow control (bleed down orifice plugged) (For sizes 18 through 100)	1

Notes:

Parts with no stock code (denoted by ◆) are subject to availability. Please contact Anfield for more information.

1) To order a complete rotary group, the valve plate (2a or 2b) must be ordered separately depending on the pump's rotation. (example for RH pump order items 1 & 2a)

2) Plug required when removing the mechanical stroke limiter. Converting A10VSO to A10VO. (Industrial to mobile)

3) U shaft is a reduced diameter spline and not recommended for through drive. Torque requirement of second pump must be considered before ordering.

4) Items 1a through 1h as individual items may not be stock items. Please contact Anfield sales before ordering. The complete rotary group (item 1) is a stock item.

SIZE 45 PARTS BREAKDOWN

VPA10V(S)O Series 31

ITEM	STOCK CODE	PART NUMBER	DESCRIPTION & NOTES	QTY
1	3S031300	A10VSO45 ROTARY GROUP¹⁾	See note 1)	1
1a	◆	A10VSO45 PISTON/SHOE ASSY (EA.) ⁴⁾	Subassembly of item 1	9 REQ.
1b	◆	A10VSO45 RETAINING PLATE ⁴⁾	Subassembly of item 1	1
1c	◆	A10VSO45 RETAINING BALL ⁴⁾	Subassembly of item 1	1
1d	◆	A10VSO45 CYLINDER BLOCK ⁴⁾	Subassembly of item 1	1
1e	◆	A10VSO45 PRESSURE PIN (SET) ⁴⁾	Subassembly of item 1	3 REQ.
1f	◆	A10VSO45 SPRING RETAINING DISC ⁴⁾	Subassembly of item 1	1
1g	◆	A10VSO45 ROT GRP SPRING ⁴⁾	Subassembly of item 1	1
1h	◆	A10VSO45 ROT GRP RETAINING RING ⁴⁾	Subassembly of item 1	1
2a	3S030200	A10VSO45 VALVE PLATE RH	See note 1) - aka Lens plate	1
2b	3S030100	A10VSO45 VALVE PLATE LH	See note 1) - aka Lens plate	1
3a	3S030600	A10VSO45 SWASHPLATE RH	Swashplate assembly for RH pump (aka Cradle assembly)	1
3b	3S030700	A10VSO45 SWASHPLATE LH	Swashplate assembly for LH pump (aka Cradle assembly)	1
4	3S030050	A10VSO45 SADDLE BEARING KIT	Swashplate bearings (Set of 2) – aka cradle or saddle bearings	1
5	3S032032	A10VSO45 DESTROKE PISTON ASSY	Control-Piston Assembly (Destroke)	1
6	3S032034	A10VSO45 BIAS PISTON ASSY	Control-Piston Assembly (Upstroke)	1
6a	3S032046	A10VSO45 BIAS SPRING	Bias spring for the bias piston assembly (item 6)	1
7	3S032020	A10VSO45 SHAFT BEARING FRONT	Front tapered-roller bearing (large)	1
8	3S032030	A10VSO45 SHAFT BEARING REAR	Rear tapered-roller bearing (small)	1
9a	3S030520	A10VSO45 KEYED SHAFT K	1" keyed shaft (for 61N00 and 62N00 pumps)	1
9b	3S030420	A10VSO45 SPLINE SHAFT S	1" 15T spline shaft (for 61N00 and 62N00 pumps)	1
9c	◆	A10VSO45 SPLINE SHAFT R	1" 15T spline shaft (for 61N00 and 62N00 pumps)	1
9d	3S030440	A10VSO45 SPLINE SHAFT U	7/8" 13T spline shaft (for 61N00 and 62N00 pumps)	1
9e	◆	A10VSO45 KEYED SHAFT P	25mm keyed shaft (for 61N00 and 62N00 pumps)	1
10a	3S030500	A10VSO45 KEYED SHAFT K THRU	1" Thru-drive keyed shaft (for 62K... pumps)	1
10b	3S030400	A10VSO45 SPLINE SHAFT S THRU	1" 15T Thru-drive spline shaft (for 62K... pumps)	1
10c	◆	A10VSO45 SPLINE SHAFT R THRU	1" 15T Thru-drive spline shaft (for 62K... pumps)	1
10d	3S030460	A10VSO45 SPLINE SHAFT U THRU³⁾	7/8" 13T Thru-drive spline shaft (for 62K... pumps)	1
10e	3S030300	A10VSO45 KEYED SHAFT P THRU	25mm Thru-drive keyed shaft (for 62K... pumps)	1
11a	3S030820	A10VSO45 ENDCOVER RH (61N00)	RH pump endcover with rear ports	1
11b	◆	A10VSO45 ENDCOVER LH (61N00)	LH pump endcover with rear ports	1
11c	3S030800	A10VSO45 ENDCOVER RH (62N00)	RH pump endcover with side ports	1
11d	3S030900	A10VSO45 ENDCOVER LH (62N00)	LH pump endcover with side ports	1

Notes:

Parts with no stock code (denoted by ◆) are subject to availability. Please contact Anfield for more information.

1) To order a complete rotary group, the valve plate (2a or 2b) must be ordered separately depending on the pump's rotation. (example for RH pump order items 1 & 2a)

2) Plug required when removing the mechanical stroke limiter. Converting A10VSO to A10VO. (Industrial to mobile)

3) U shaft is a reduced diameter spline and not recommended for through drive. Torque requirement of second pump must be considered before ordering.

4) Items 1a through 1h as individual items may not be stock items. Please contact Anfield sales before ordering. The complete rotary group (item 1) is a stock item.

Parts are fully interchangeable with Rexroth® A10V(S)O series 31

ANFIELD Service Parts List VPA10V(S)O Series 31 - Rev. - (11/17/2025)

SIZE 45 PARTS BREAKDOWN *(Continued)*

VPA10V(S)O Series 31

ITEM	STOCK CODE	PART NUMBER	DESCRIPTION & NOTES	QTY
12a	3S030815	A10VSO45 THRU DRIVE ENDCOVER RH (62K01/K52)	82-2 (SAE A) Thru-drive mounting flange (RH pump) axial seal	1
12b	◆	A10VSO45 THRU DRIVE ENDCOVER LH (62K01/K52)	82-2 (SAE A) Thru-drive mounting flange (LH pump) axial seal	1
12c	◆	A10VSO45 THRU DRIVE ENDCOVER RH (62K02)	101-2 (SAE B) Thru-drive mounting flange (RH pump) radial seal	1
12d	◆	A10VSO45 THRU DRIVE ENDCOVER LH (62K02)	101-2 (SAE B) Thru-drive mounting flange (LH pump) radial seal	1
12e	◆	A10VSO45 THRU DRIVE ENDCOVER RH (62K68)	101-2 (SAE B) Thru-drive mounting flange (RH pump) axial seal	1
12f	◆	A10VSO45 THRU DRIVE ENDCOVER LH (62K68)	101-2 (SAE B) Thru-drive mounting flange (LH pump) axial seal	1
12g	3S030810	A10VSO45 THRU DRIVE ENDCOVER RH (62K04)	101-2 (SAE B) Thru-drive mounting flange (RH pump) axial seal	1
12h	◆	A10VSO45 THRU DRIVE ENDCOVER LH (62K04)	101-2 (SAE B) Thru-drive mounting flange (LH pump) axial seal	1
13a	3S030246	A10VSO45 COUPLING K01	5/8 in 9T 16/32DP (SAE A) splined shaft coupling w/ axial limit	1
13b	◆	A10VSO45 COUPLING K52	3/4 in 11T 16/32DP (SAE A-B) splined shaft coupling w/ axial limit	1
13c	◆	A10VSO45 COUPLING K02	7/8 in 13T 16/32DP (SAE B) splined shaft coupling no axial limit	1
13d	◆	A10VSO45 COUPLING K68	7/8 in 13T 16/32DP (SAE B) splined shaft coupling w/ axial limit	1
13e	3S030250	A10VSO45 COUPLING K04	1 in 15T 16/32DP (SAE B-B) splined shaft coupling w/ axial limit	1
14a	3S031200	A10VSO45 SEAL KIT NITRILE	Buna-N seal kit	1
14b	3S031100	A10VSO45 SEAL KIT VITON	FKM Fluorocarbon Viton® seal kit	1
15	3S032038	A10VSO45 MAX DISP PLUG ³⁾	See note 2)	
16a	3S013402	DR CONTROLLER SIZE 18-100 NEW	Pressure control (For sizes 18 through 100)	1
16b	3S013000	DRG CONTROLLER SIZE 18-100	Pressure remote control (For sizes 18 through 100)	1
16c	3S013300	DFR CONTROLLER SIZE 18-100	Pressure and flow control (w/ bleed down) (For sizes 18 through 100)	1
16d	3S013100	DFR1 CONTROLLER SIZE 18-100	Pressure and flow control (bleed down orifice plugged) (For sizes 18 through 100)	1

Notes:

Parts with no stock code (denoted by ◆) are subject to availability. Please contact Anfield for more information.

1) To order a complete rotary group, the valve plate (2a or 2b) must be ordered separately depending on the pump's rotation. (example for RH pump order items 1 & 2a)

2) Plug required when removing the mechanical stroke limiter. Converting A10VSO to A10VO. (Industrial to mobile)

3) U shaft is a reduced diameter spline and not recommended for through drive. Torque requirement of second pump must be considered before ordering.

4) Items 1a through 1h as individual items may not be stock items. Please contact Anfield sales before ordering. The complete rotary group (item 1) is a stock item.

SIZE 71 PARTS BREAKDOWN

VPA10V(S)O Series 31

ITEM	STOCK CODE	PART NUMBER	DESCRIPTION & NOTES	QTY
1	3S041200	A10VSO71 ROTARY GROUP¹⁾	See note 1)	1
1a	◆	A10VSO71 PISTON/SHOE ASSY (EA.) ⁴⁾	Subassembly of item 1	9 REQ.
1b	◆	A10VSO71 RETAINING PLATE ⁴⁾	Subassembly of item 1	1
1c	◆	A10VSO71 RETAINING BALL ⁴⁾	Subassembly of item 1	1
1d	◆	A10VSO71 CYLINDER BLOCK ⁴⁾	Subassembly of item 1	1
1e	◆	A10VSO71 PRESSURE PIN (SET) ⁴⁾	Subassembly of item 1	3 REQ.
1f	◆	A10VSO71 SPRING RETAINING DISC ⁴⁾	Subassembly of item 1	1
1g	◆	A10VSO71 ROT GRP SPRING ⁴⁾	Subassembly of item 1	1
1h	◆	A10VSO71 ROT GRP RETAINING RING ⁴⁾	Subassembly of item 1	1
2a	3S040100	A10VSO71 VALVE PLATE RH	See note 1) - aka Lens plate	1
2b	3S040200	A10VSO71 VALVE PLATE LH	See note 1) - aka Lens plate	1
3a	3S040500	A10VSO71 SWASHPLATE RH	Swashplate assembly for RH pump (aka Cradle assembly)	1
3b	3S040600	A10VSO71 SWASHPLATE LH	Swashplate assembly for LH pump (aka Cradle assembly)	1
4	3S040050	A10VSO71 SADDLE BEARING KIT	Swashplate bearings (Set of 2) – aka cradle or saddle bearings	1
5	3S042050	A10VSO71 DESTROKE PISTON ASSY	Control-Piston Assembly (Destroke)	1
6	3S042052	A10VSO71 BIAS PISTON ASSY	Control-Piston Assembly (Upstroke)	1
6a	3S042060	A10VSO71 BIAS SPRING	Bias spring for the bias piston assembly (item 6)	1
7	3S042020	A10VSO71 SHAFT BEARING FRONT	Front tapered-roller bearing (large)	1
8	3S042030	A10VSO71 SHAFT BEARING REAR	Rear tapered-roller bearing (small)	1
9a	3S040420	A10VSO71 KEYED SHAFT K	1-1/4" keyed shaft (for 61N00 and 62N00 pumps)	1
9b	3S040320	A10VSO71 SPLINE SHAFT S	1-1/4" 14T spline shaft (for 61N00 and 62N00 pumps)	1
9c	3S040440	A10VSO71 SPLINE SHAFT U	1" 15T spline shaft (for 61N00 and 62N00 pumps)	1
9d	◆	A10VSO71 KEYED SHAFT P	32mm keyed shaft (for 61N00 and 62N00 pumps)	1
10a	3S040400	A10VSO71 KEYED SHAFT K THRU	1-1/4" Thru-drive keyed shaft (for 62K... pumps)	1
10b	3S040340	A10VSO71 SPLINE SHAFT S THRU	1-1/4" 14T Thru-drive spline shaft (for 62K... pumps)	1
10c	3S040315	A10VSO71 SPLINE SHAFT R THRU	1-1/4" 14T Thru-drive spline shaft (Reinforced) (for 62K... pumps)	1
10d	3S040300	A10VSO71 KEYED SHAFT P THRU	32mm Thru-drive keyed shaft (for 62K... pumps)	1
11a	3S040810	A10VSO71 ENDCOVER RH (61N00)	RH pump endcover with rear ports	1
11b	3S040820	A10VSO71 ENDCOVER LH (61N00)	LH pump endcover with rear ports	1
11c	3S040700	A10VSO71 ENDCOVER RH (62N00)	RH pump endcover with side ports	1
11d	3S040800	A10VSO71 ENDCOVER LH (62N00)	LH pump endcover with side ports	1

Notes:

Parts with no stock code (denoted by ◆) are subject to availability. Please contact Anfield for more information.

1) To order a complete rotary group, the valve plate (2a or 2b) must be ordered separately depending on the pump's rotation. (example for RH pump order items 1 & 2a)

2) Plug required when removing the mechanical stroke limiter. Converting A10VSO to A10VO. (Industrial to mobile)

3) U shaft is a reduced diameter spline and not recommended for through drive. Torque requirement of second pump must be considered before ordering.

4) Items 1a through 1h as individual items may not be stock items. Please contact Anfield sales before ordering. The complete rotary group (item 1) is a stock item.

Parts are fully interchangeable with Rexroth® A10V(S)O series 31

ANFIELD Service Parts List VPA10V(S)O Series 31 - Rev. - (11/17/2025)

SIZE 71 PARTS BREAKDOWN *(Continued)*

VPA10V(S)O Series 31

ITEM	STOCK CODE	PART NUMBER	DESCRIPTION & NOTES	QTY
12a	◆	A10VSO71 THRU DRIVE ENDCOVER RH (62K01/K52)	82-2 (SAE A) Thru-drive mounting flange (RH pump) axial seal	1
12b	◆	A10VSO71 THRU DRIVE ENDCOVER LH (62K01/K52)	82-2 (SAE A) Thru-drive mounting flange (LH pump) axial seal	1
12c	◆	A10VSO71 THRU DRIVE ENDCOVER RH (62K02)	101-2 (SAE B) Thru-drive mounting flange (RH pump) radial seal	1
12d	◆	A10VSO71 THRU DRIVE ENDCOVER LH (62K02)	101-2 (SAE B) Thru-drive mounting flange (LH pump) radial seal	1
12e	◆	A10VSO71 THRU DRIVE ENDCOVER RH (62K68)	101-2 (SAE B) Thru-drive mounting flange (RH pump) axial seal	1
12f	◆	A10VSO71 THRU DRIVE ENDCOVER LH (62K68)	101-2 (SAE B) Thru-drive mounting flange (LH pump) axial seal	1
12g	◆	A10VSO71 THRU DRIVE ENDCOVER RH (62K04)	101-2 (SAE B) Thru-drive mounting flange (RH pump) axial seal	1
12h	◆	A10VSO71 THRU DRIVE ENDCOVER LH (62K04)	101-2 (SAE B) Thru-drive mounting flange (LH pump) axial seal	1
12i	◆	A10VSO71 THRU DRIVE ENDCOVER RH (62K07/K08)	127-2 (SAE C) Thru-drive mounting flange (RH pump) axial seal	
12j	3S041505	A10VSO71 THRU DRIVE ENDCOVER LH (62K07/K08)	127-2 (SAE C) Thru-drive mounting flange (LH pump) axial seal	
13a	◆	A10VSO71 COUPLING K01	5/8 in 9T 16/32DP (SAE A) splined shaft coupling w/ axial limit	1
13b	◆	A10VSO71 COUPLING K52	3/4 in 11T 16/32DP (SAE A-B) splined shaft coupling w/ axial limit	1
13c	◆	A10VSO71 COUPLING K02	7/8 in 13T 16/32DP (SAE B) splined shaft coupling no axial limit	
13d	3S041540	A10VSO71 COUPLING K68	7/8 in 13T 16/32DP (SAE B) splined shaft coupling w/ axial limit	1
13e	◆	A10VSO71 COUPLING K04	1 in 15T 16/32DP (SAE B-B) splined shaft coupling w/ axial limit	1
13f	3S041500	A10VSO71 COUPLING K07	1-1/4 in 14T 12/24DP (SAE C) splined shaft coupling w/ axial limit	1
13g	3S041520	A10VSO71 COUPLING K08	1-1/4 in (SAE C) keyed shaft coupling w/ keyway for 5/16" key	
14a	3S041100	A10VSO71 SEAL KIT NITRILE	Buna-N seal kit	1
14b	3S040900	A10VSO71 SEAL KIT VITON	FKM Fluorocarbon Viton® seal kit	1
15	3S042054	A10VSO71 MAX DISP PLUG2)	See note 2)	
16a	3S013402	DR CONTROLLER SIZE 18-100 NEW	Pressure control (For sizes 18 through 100)	1
16b	3S013000	DRG CONTROLLER SIZE 18-100	Pressure remote control (For sizes 18 through 100)	1
16c	3S013300	DFR CONTROLLER SIZE 18-100	Pressure and flow control (w/ bleed down) (For sizes 18 through 100)	1
16d	3S013100	DFR1 CONTROLLER SIZE 18-100	Pressure and flow control (bleed down orifice plugged) (For sizes 18 through 100)	1

Notes:

Parts with no stock code (denoted by ◆) are subject to availability. Please contact Anfield for more information.

1) To order a complete rotary group, the valve plate (2a or 2b) must be ordered separately depending on the pump's rotation. (example for RH pump order items 1 & 2a)

2) Plug required when removing the mechanical stroke limiter. Converting A10VSO to A10VO. (Industrial to mobile)

3) U shaft is a reduced diameter spline and not recommended for through drive. Torque requirement of second pump must be considered before ordering.

4) Items 1a through 1h as individual items may not be stock items. Please contact Anfield sales before ordering. The complete rotary group (item 1) is a stock item.

SIZE 100 PARTS BREAKDOWN

VPA10V(S)O Series 31

ITEM	STOCK CODE	PART NUMBER	DESCRIPTION & NOTES	QTY
1	3S050800	A10VSO100 ROTARY GROUP¹⁾	See note 1)	1
1a	◆	A10VSO100 PISTON/SHOE ASSY (EA.) ⁴⁾	Subassembly of item 1	9 REQ.
1b	◆	A10VSO100 RETAINING PLATE ⁴⁾	Subassembly of item 1	1
1c	◆	A10VSO100 RETAINING BALL ⁴⁾	Subassembly of item 1	1
1d	◆	A10VSO100 CYLINDER BLOCK ⁴⁾	Subassembly of item 1	1
1e	◆	A10VSO100 PRESSURE PIN (SET) ⁴⁾	Subassembly of item 1	3 REQ.
1f	◆	A10VSO100 SPRING RETAINING DISC ⁴⁾	Subassembly of item 1	1
1g	◆	A10VSO100 ROT GRP SPRING ⁴⁾	Subassembly of item 1	1
1h	◆	A10VSO100 ROT GRP RETAINING RING ⁴⁾	Subassembly of item 1	1
2a	3S050100	A10VSO100 VALVE PLATE RH	See note 1) - aka Lens plate	1
2b	3S050200	A10VSO100 VALVE PLATE LH	See note 1) - aka Lens plate	1
3a	3S052100	A10VSO100 SWASHPLATE RH	Swashplate assembly for RH pump (aka Cradle assembly)	1
3b	3S052110	A10VSO100 SWASHPLATE LH	Swashplate assembly for LH pump (aka Cradle assembly)	1
4	3S050050	A10VSO100 SADDLE BEARING KIT	Swashplate bearings (Set of 2) – aka cradle or saddle bearings	1
5	3S052140	A10VSO100 DESTROKE PISTON ASSY	Control-Piston Assembly (Destroke)	1
6	3S052142	A10VSO100 BIAS PISTON ASSY	Control-Piston Assembly (Upstroke)	1
6a	3S052148	A10VSO100 BIAS SPRING	Bias spring for the bias piston assembly (item 6)	1
7	3S052020	A10VSO100 SHAFT BEARING FRONT	Front tapered-roller bearing (large)	1
8	3S051304	A10VSO100 SHAFT BEARING REAR	Rear tapered-roller bearing (small)	1
9a	3S050320	A10VSO100 KEYED SHAFT K	1-1/2" keyed shaft (for 61N00 and 62N00 pumps)	1
9b	3S050420	A10VSO100 SPLINE SHAFT S	1-1/2" 17T spline shaft (for 61N00 and 62N00 pumps)	1
9c	3S050460	A10VSO100 SPLINE SHAFT U	1-1/4" 14T spline shaft (for 61N00 and 62N00 pumps)	1
9d	◆	A10VSO100 KEYED SHAFT P	40mm keyed shaft (for 61N00 and 62N00 pumps)	1
10a	3S050300	A10VSO100 KEYED SHAFT K THRU	1-1/2" Thru-drive keyed shaft (for 62K... pumps)	1
10b	3S050400	A10VSO100 SPLINE SHAFT S THRU	1-1/2" 17T Thru-drive spline shaft (for 62K... pumps)	1
10c	3S050500	A10VSO100 SPLINE SHAFT U THRU³⁾	1-1/4" 14T Thru-drive spline shaft1) (for 62K... pumps)	1
10d	◆	A10VSO100 KEYED SHAFT P THRU	40mm Thru-drive keyed shaft (for 62K... pumps)	1
11a	◆	A10VSO100 ENDCOVER RH (61N00)	RH pump endcover with rear ports	1
11b	◆	A10VSO100 ENDCOVER LH (61N00)	LH pump endcover with rear ports	1
11c	3S051290	A10VSO100 ENDCOVER RH (62N00)	RH pump endcover with side ports	1
11d	3S051200	A10VSO100 ENDCOVER LH (62N00)	LH pump endcover with side ports	1

Notes:

Parts with no stock code (denoted by ◆) are subject to availability. Please contact Anfield for more information.

- 1) To order a complete rotary group, the valve plate (2a or 2b) must be ordered separately depending on the pump's rotation. (example for RH pump order items 1 & 2a)
- 2) Plug required when removing the mechanical stroke limiter. Converting A10VSO to A10VO. (Industrial to mobile)
- 3) U shaft is a reduced diameter spline and not recommended for through drive. Torque requirement of second pump must be considered before ordering.
- 4) Items 1a through 1h as individual items may not be stock items. Please contact Anfield sales before ordering. The complete rotary group (item 1) is a stock item.

Parts are fully interchangeable with Rexroth® A10V(S)O series 31

ANFIELD Service Parts List VPA10V(S)O Series 31 - Rev. - (11/17/2025)

SIZE 100 PARTS BREAKDOWN (Continued)

VPA10V(S)O Series 31

ITEM	STOCK CODE	PART NUMBER	DESCRIPTION & NOTES	QTY
12a	◆	A10VSO100 THRU DRIVE ENDCOVER RH (62K01/K52)	82-2 (SAE A) Thru-drive mounting flange (RH pump) axial seal	1
12b	◆	A10VSO100 THRU DRIVE ENDCOVER LH (62K01/K52)	82-2 (SAE A) Thru-drive mounting flange (LH pump) axial seal	1
12c	◆	A10VSO100 THRU DRIVE ENDCOVER RH (62K02)	101-2 (SAE B) Thru-drive mounting flange (RH pump) radial seal	1
12d	◆	A10VSO100 THRU DRIVE ENDCOVER LH (62K02)	101-2 (SAE B) Thru-drive mounting flange (LH pump) radial seal	1
12e	◆	A10VSO100 THRU DRIVE ENDCOVER RH (62K68)	101-2 (SAE B) Thru-drive mounting flange (RH pump) axial seal	1
12f	◆	A10VSO100 THRU DRIVE ENDCOVER LH (62K68)	101-2 (SAE B) Thru-drive mounting flange (LH pump) axial seal	1
12g	◆	A10VSO100 THRU DRIVE ENDCOVER RH (62K04)	101-2 (SAE B) Thru-drive mounting flange (RH pump) axial seal	1
12h	◆	A10VSO100 THRU DRIVE ENDCOVER LH (62K04)	101-2 (SAE B) Thru-drive mounting flange (LH pump) axial seal	1
12i	3S051301	A10VSO100 THRU DRIVE ENDCOVER RH (62K07/K08/K24)	127-2 (SAE C) Thru-drive mounting flange (RH pump) axial seal	1
12j	3S051300	A10VSO100 THRU DRIVE ENDCOVER LH (62K07/K08/K24)	127-2 (SAE C) Thru-drive mounting flange (LH pump) axial seal	1
13a	◆	A10VSO100 COUPLING K01	5/8 in 9T 16/32DP (SAE A) splined shaft coupling w/ axial limit	1
13b	◆	A10VSO100 COUPLING K52	3/4 in 11T 16/32DP (SAE A-B) splined shaft coupling w/ axial limit	1
13c	3S051492	A10VSO100 COUPLING K02	7/8 in 13T 16/32DP (SAE B) splined shaft coupling no axial limit	1
13d	◆	A10VSO71 COUPLING K68	7/8 in 13T 16/32DP (SAE B) splined shaft coupling w/ axial limit	1
13e	3S051495	A10VSO100 COUPLING K04	1 in 15T 16/32DP (SAE B-B) splined shaft coupling w/ axial limit	1
13f	3S051500	A10VSO100 COUPLING K07/KB5	1-1/4 in 14T 12/24DP (SAE C) splined shaft coupling w/ axial limit	1
13g	3S051510	A10VSO100 COUPLING K08	1-1/4 in (SAE C) keyed shaft coupling w/ keyway for 5/16" key	
13h	◆	A10VSO100 COUPLING K24	1-1/2 in 17T 12/24DP (SAE C-C) splined shaft coupling w/ axial limit	1
14a	3S050700	A10VSO100 SEAL KIT NITRILE	Buna-N seal kit	1
14b	3S050600	A10VSO100 SEAL KIT VITON	FKM Fluorocarbon Viton® seal kit	1
15	3S052144	A10VSO100 MAX DISP PLUG ²⁾	See note 2)	
16a	3S013402	DR CONTROLLER SIZE 18-100 NEW	Pressure control (For sizes 18 through 100)	1
16b	3S013000	DRG CONTROLLER SIZE 18-100	Pressure remote control (For sizes 18 through 100)	1
16c	3S013300	DFR CONTROLLER SIZE 18-100	Pressure and flow control (w/ bleed down) (For sizes 18 through 100)	1
16d	3S013100	DFR1 CONTROLLER SIZE 18-100	Pressure and flow control (bleed down orifice plugged) (For sizes 18 through 100)	1

Notes:

Parts with no stock code (denoted by ◆) are subject to availability. Please contact Anfield for more information.

1) To order a complete rotary group, the valve plate (2a or 2b) must be ordered separately depending on the pump's rotation. (example for RH pump order items 1 & 2a)

2) Plug required when removing the mechanical stroke limiter. Converting A10VSO to A10VO. (Industrial to mobile)

3) U shaft is a reduced diameter spline and not recommended for through drive. Torque requirement of second pump must be considered before ordering.

4) Items 1a through 1h as individual items may not be stock items. Please contact Anfield sales before ordering. The complete rotary group (item 1) is a stock item.

SIZE 140 PARTS BREAKDOWN

VPA10V(S)O Series 31

ITEM	STOCK CODE	PART NUMBER	DESCRIPTION & NOTES	QTY
1	3S061300	A10VSO140 ROTARY GROUP¹⁾	See note 1)	1
1a	◆	A10VSO140 PISTON/SHOE ASSY (EA.) ⁴⁾	Subassembly of item 1	9 REQ.
1b	◆	A10VSO140 RETAINING PLATE ⁴⁾	Subassembly of item 1	1
1c	◆	A10VSO140 RETAINING BALL ⁴⁾	Subassembly of item 1	1
1d	◆	A10VSO140 CYLINDER BLOCK ⁴⁾	Subassembly of item 1	1
1e	◆	A10VSO140 PRESSURE PIN (SET) ⁴⁾	Subassembly of item 1	3 REQ.
1f	◆	A10VSO140 SPRING RETAINING DISC ⁴⁾	Subassembly of item 1	1
1g	◆	A10VSO140 ROT GRP SPRING ⁴⁾	Subassembly of item 1	1
1h	◆	A10VSO140 ROT GRP RETAINING RING ⁴⁾	Subassembly of item 1	1
2a	3S060100	A10VSO140 VALVE PLATE RH	See note 1) - aka Lens plate	1
2b	3S060200	A10VSO140 VALVE PLATE LH	See note 1) - aka Lens plate	1
3a	3S060600	A10VSO140 SWASHPLATE RH	Swashplate assembly for RH pump (aka Cradle assembly)	1
3b	3S060700	A10VSO140 SWASHPLATE LH	Swashplate assembly for LH pump (aka Cradle assembly)	1
4	3S060050	A10VSO140 SADDLE BEARING KIT	Swashplate bearings (Set of 2) – aka cradle or saddle bearings	1
5	3S061510	A10VSO140 DESTROKE PISTON ASSY	Control-Piston Assembly (Destroke)	1
6	3S061512	A10VSO140 BIAS PISTON ASSY	Control-Piston Assembly (Upstroke)	1
6a	3S061520	A10VSO140 BIAS SPRING	Bias spring for the bias piston assembly (item 6)	1
7	◆	A10VSO140 SHAFT BEARING FRONT	Front tapered-roller bearing (large)	1
8	◆	A10VSO140 SHAFT BEARING REAR	Rear tapered-roller bearing (small)	1
9a	3S060420	A10VSO140 KEYED SHAFT K	1-3/4" keyed shaft (for 61N00 and 62N00 pumps)	1
9b	3S060440	A10VSO140 SPLINE SHAFT S	1-3/4" 13T spline shaft (for 61N00 and 62N00 pumps)	1
9c	◆	A10VSO140 KEYED SHAFT P	45mm keyed shaft (for 61N00 and 62N00 pumps)	1
10a	3S060400	A10VSO140 KEYED SHAFT K THRU	1-3/4" Thru-drive keyed shaft (for 62K... pumps)	1
10b	3S060500	A10VSO140 SPLINE SHAFT S THRU	1-3/4" 13T Thru-drive spline shaft (for 62K... pumps)	1
10c	3S060300	A10VSO140 KEYED SHAFT P THRU	40mm Thru-drive keyed shaft (for 62K... pumps)	1
11a	◆	A10VSO140 ENDCOVER RH (61N00)	RH pump endcover with rear ports	1
11b	◆	A10VSO140 ENDCOVER LH (61N00)	LH pump endcover with rear ports	1
11c	3S060800	A10VSO140 ENDCOVER RH (62N00)	RH pump endcover with side ports	1
11d	3S060900	A10VSO140 ENDCOVER LH (62N00)	LH pump endcover with side ports	1

Notes:

Parts with no stock code (denoted by ◆) are subject to availability. Please contact Anfield for more information.

- 1) To order a complete rotary group, the valve plate (2a or 2b) must be ordered separately depending on the pump's rotation. (example for RH pump order items 1 & 2a)
- 2) Plug required when removing the mechanical stroke limiter. Converting A10VSO to A10VO. (Industrial to mobile)
- 3) U shaft is a reduced diameter spline and not recommended for through drive. Torque requirement of second pump must be considered before ordering.
- 4) Items 1a through 1h as individual items may not be stock items. Please contact Anfield sales before ordering. The complete rotary group (item 1) is a stock item.

Parts are fully interchangeable with Rexroth® A10V(S)O series 31

ANFIELD Service Parts List VPA10V(S)O Series 31 - Rev. - (11/17/2025)

SIZE 140 PARTS BREAKDOWN *(Continued)*

VPA10V(S)O Series 31

ITEM	STOCK CODE	PART NUMBER	DESCRIPTION & NOTES	QTY
12a	◆	A10VSO140 THRU DRIVE ENDCOVER RH (62K01/K52)	82-2 (SAE A) Thru-drive mounting flange (RH pump) axial seal	1
12b	◆	A10VSO140 THRU DRIVE ENDCOVER LH (62K01/K52)	82-2 (SAE A) Thru-drive mounting flange (LH pump) axial seal	1
12c	◆	A10VSO140 THRU DRIVE ENDCOVER RH (62K02)	101-2 (SAE B) Thru-drive mounting flange (RH pump) radial seal	1
12d	◆	A10VSO140 THRU DRIVE ENDCOVER LH (62K02)	101-2 (SAE B) Thru-drive mounting flange (LH pump) radial seal	1
12e	◆	A10VSO140 THRU DRIVE ENDCOVER RH (62K68)	101-2 (SAE B) Thru-drive mounting flange (RH pump) axial seal	1
12f	◆	A10VSO140 THRU DRIVE ENDCOVER LH (62K68)	101-2 (SAE B) Thru-drive mounting flange (LH pump) axial seal	1
12g	◆	A10VSO140 THRU DRIVE ENDCOVER RH (62K04)	101-2 (SAE B) Thru-drive mounting flange (RH pump) axial seal	1
12h	◆	A10VSO140 THRU DRIVE ENDCOVER LH (62K04)	101-2 (SAE B) Thru-drive mounting flange (LH pump) axial seal	1
12i	◆	A10VSO140 THRU DRIVE ENDCOVER RH (62K07/K24)	127-2 (SAE C) Thru-drive mounting flange (RH pump) axial seal	1
12j	◆	A10VSO140 THRU DRIVE ENDCOVER LH (62K07/K24)	127-2 (SAE C) Thru-drive mounting flange (LH pump) axial seal	1
12k	◆	A10VSO140 THRU DRIVE ENDCOVER RH (62K17)	152-4 (SAE D) Thru-drive mounting flange (RH pump) axial seal	1
12l	◆	A10VSO140 THRU DRIVE ENDCOVER LH (62K17)	152-4 (SAE D) Thru-drive mounting flange (LH pump) axial seal	1
13a	◆	A10VSO140 COUPLING K01	5/8 in 9T 16/32DP (SAE A) splined shaft coupling	1
13b	◆	A10VSO140 COUPLING K52	3/4 in 11T 16/32DP (SAE A-B) splined shaft coupling	1
13c	◆	A10VSO140 COUPLING K02	7/8 in 13T 16/32DP splined shaft coupling	1
13d	◆	A10VSO45 COUPLING K04	1 in 15T 16/32DP (SAE B-B) splined shaft coupling	1
13e	◆	A10VSO140 COUPLING K07	1-1/4 in 14T 12/24DP (SAE C) splined shaft coupling w/ axial limit	1
13f	◆	A10VSO140 COUPLING K24	1-1/2 in 17T 12/24DP (SAE C-C) splined shaft coupling w/ axial limit	1
13g	◆	A10VSO140 COUPLING K17	1-3/4 in 13T 8/16DP (SAE D) splined shaft coupling w/ axial limit	
14a	3S061100	A10VSO140 SEAL KIT NITRILE	Buna-N seal kit	1
14b	3S061200	A10VSO140 SEAL KIT VITON	FKM Fluorocarbon Viton® seal kit	1
15	3S061514	A10VSO140 MAX DISP PLUG ²⁾	See note 2)	
16a	3S013510	DR CONTROLLER SIZE 140	Pressure control (For size 140 only)	1
16b	3S013520	DRG CONTROLLER SIZE 140	Pressure remote control (For size 140 only)	1
16c	3S013505	DFR CONTROLLER SIZE 140	Pressure and flow control (w/ bleed down) (For size 140 only)	1
16d	3S013500	DFR1 CONTROLLER SIZE 140	Pressure and flow control (bleed down orifice plugged) (For size 140 only)	1

Notes:

Parts with no stock code (denoted by ◆) are subject to availability. Please contact Anfield for more information.

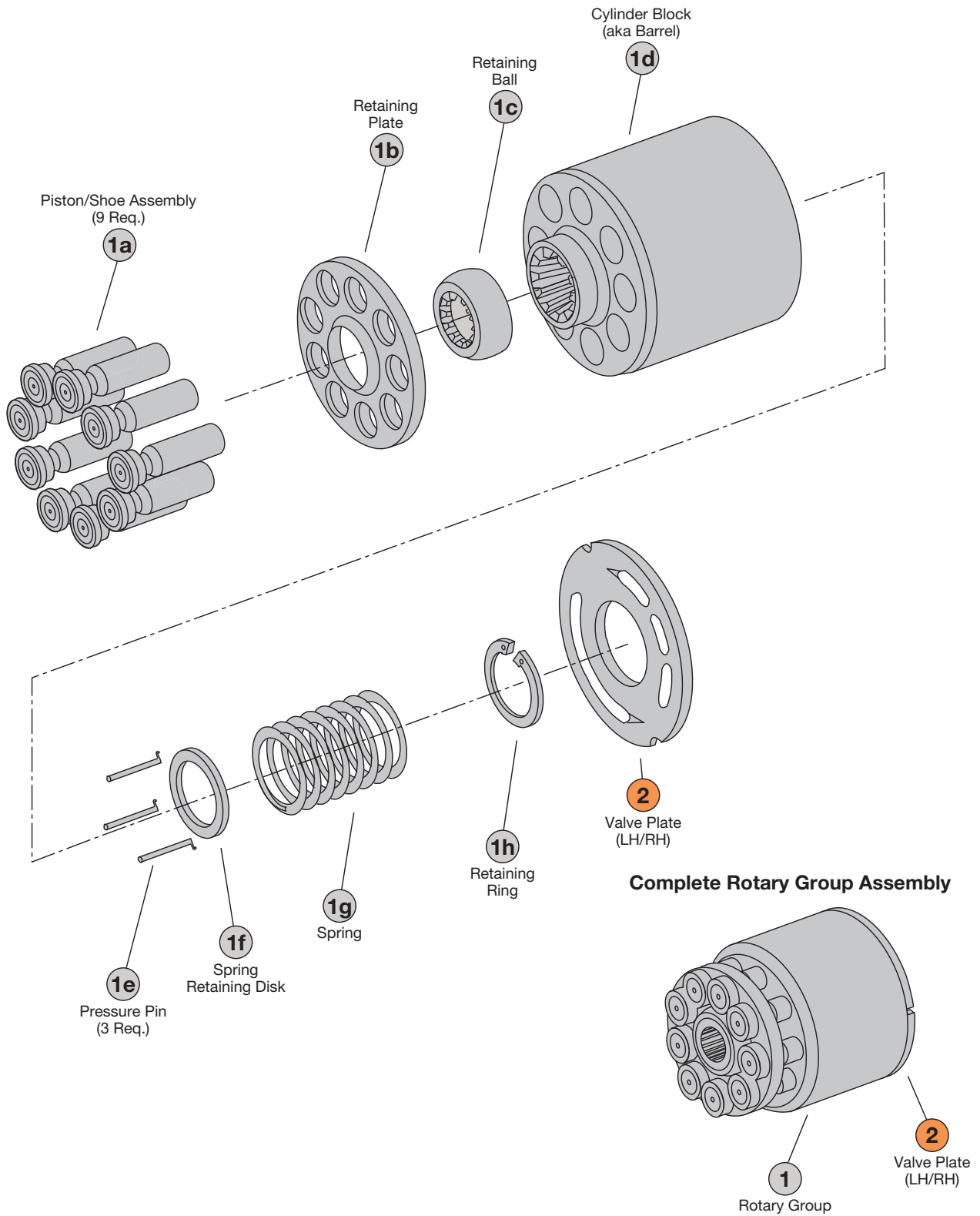
1) To order a complete rotary group, the valve plate (2a or 2b) must be ordered separately depending on the pump's rotation. (example for RH pump order items 1 & 2a)

2) Plug required when removing the mechanical stroke limiter. Converting A10VSO to A10VO. (Industrial to mobile)

3) U shaft is a reduced diameter spline and not recommended for through drive. Torque requirement of second pump must be considered before ordering.

4) Items 1a through 1h as individual items may not be stock items. Please contact Anfield sales before ordering. The complete rotary group (item 1) is a stock item.

PISTON PUMP ROTARY GROUP ASSEMBLY DIAGRAM



Note:

1) To order a complete rotary group from tables on pages 3-13, the valve plate (2a or 2b) must be ordered separately depending on the pump's rotation. (example for RH pump order items 1 & 2a)

Strength in Products, Strength in Service

- Pressure Switches
- Temperature Switches
- Differential Switches
- Level Switches
- Vacuum Switches
- Transducers
- Gear Pumps
- Vane Pumps
- Dump Pumps
- Variable Piston Pumps
- Orbital Motors
- Vane Motors
- Gear Motors
- Monoblock Valves
- High Pressure Ball Valves
- Flow Controls & Needle Valves
- Drive Couplings
- Flanges
- Gauges
- Test Points

ANFIELD Service Parts List VPA10V(S)O Series 31 - Rev. - (11/17/2025)



Anfield Industries Inc.

USA

375 International Park
Suite 300
Newnan, Georgia 30265
Phone: (404) 530-3804
Fax: (404) 530-3805
Email: info@anfieldind.com
Web: www.anfieldind.com

Canada

8831 Keele Street
Concord, Ontario
L4K 2N1
Phone: (905) 303-1369
Fax: (905) 303-7256
Email: sales@mpfiltricanada.com
Web: www.mpfiltricanada.com